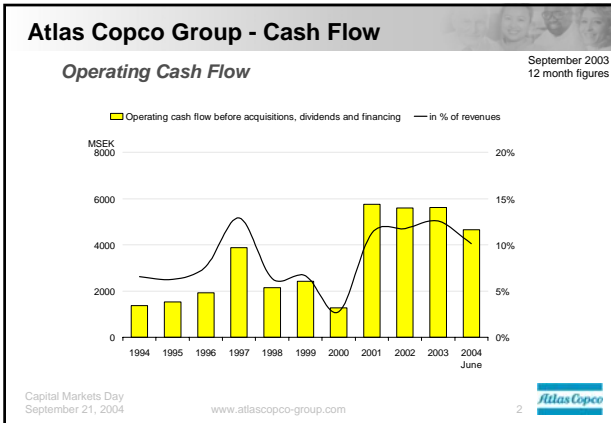


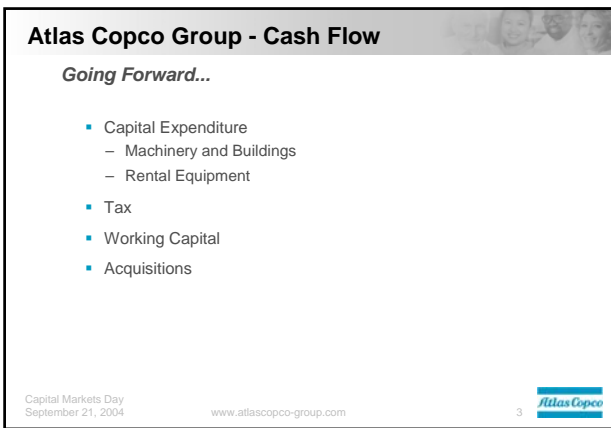


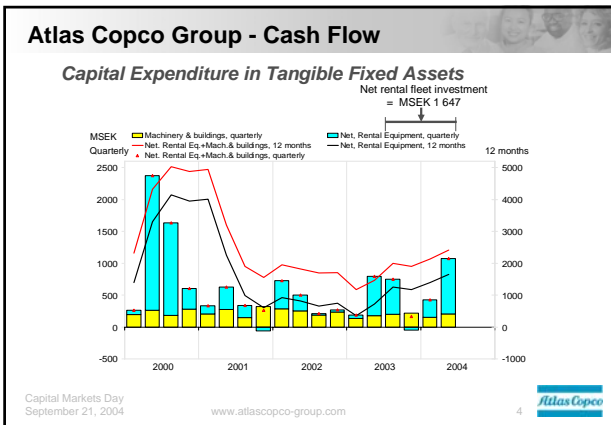
Atlas Copco Group Financials

Hans Ola Meyer









Atlas Copco Group - Cash Flow

Going Forward...

- Capital Expenditure, Net Rental Equipment
 - Current 12 month spending, 1.5 – 2.0 billion SEK reflects a 1-2 percent rental revenue volume growth.
 - For a 5% rental revenue volume growth in Rental Service, we estimate that net rental equipment cap ex reaches 2.0 - 2.5 billion SEK annually.

Capital Markets Day
September 21, 2004

www.atlascopco-group.com

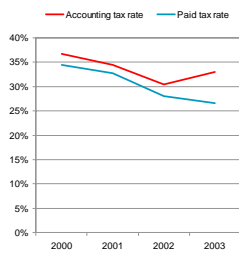
5



Atlas Copco Group - Cash Flow

Tax

12 month values



- USA
 - Tax vs. accounting depreciation
- Sweden
 - Untaxed reserves

Capital Markets Day
September 21, 2004

www.atlascopco-group.com

6



Atlas Copco Group - Currency Effects

Policy

- **Transaction exposure:** Match the currency flows as much as possible. In case of a mismatch, the divisions can hedge actual and forecasted flows with the Internal Bank, to secure short-term stability of profits. The result of these hedges affects the Business Area operating profit. The Group use option contracts to hedge total downside risk. Currently at approximately 95% of spot rates and 12 month ahead. The result of Group hedges is reported as a corporate item.
- **Translation exposure:** match assets and liabilities in the same currencies as much as possible. A mismatch is left unhedged.

Capital Markets Day
September 21, 2004

www.atlascopco-group.com

7



Currency Impact on PAFI, Summary

January – June 2004 vs. 2003

SEK/USD 7.47 vs 8.32 - SEK/EUR 9.16 vs. 9.17

- Currency impact ~ MSEK -400
- Translation exposure ~ MSEK -100
- Transaction exposure ~ MSEK -300

Capital Markets Day
September 21, 2004

www.atascopco-group.com

8





Atlas Copco

Capital Markets Day
September 21, 2004

www.atascopco-group.com

9