

## Industrial Technique



Atlas Copco Capital Markets Day, November 15, 2012  
Mats Rahmström, Business Area President

*Sustainable Productivity*



2 Atlas Copco Capital Markets Day - November 15, 2012

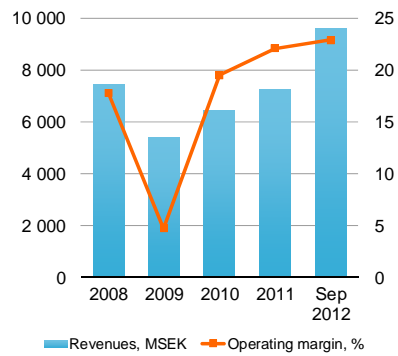
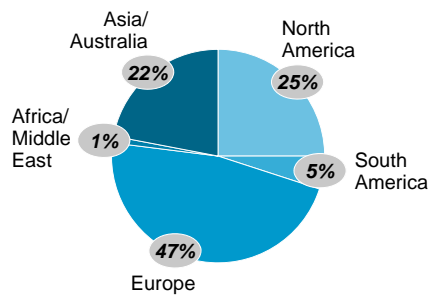
## Financial performance



3 Atlas Copco Capital Markets Day - November 15, 2012

## Industrial Technique

### Revenues and operating margin



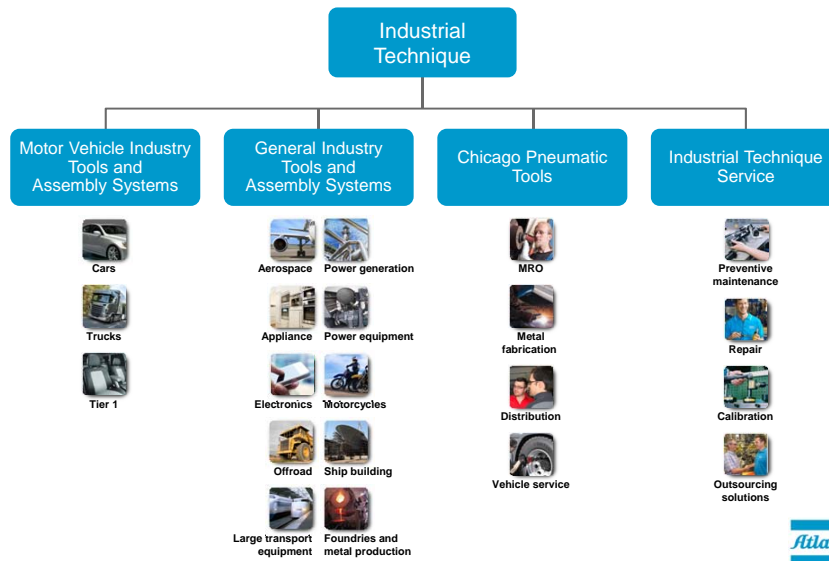
Pie chart: Revenues YTD September 2012, Graph: 12 months figures

4 Atlas Copco Capital Markets Day - November 15, 2012

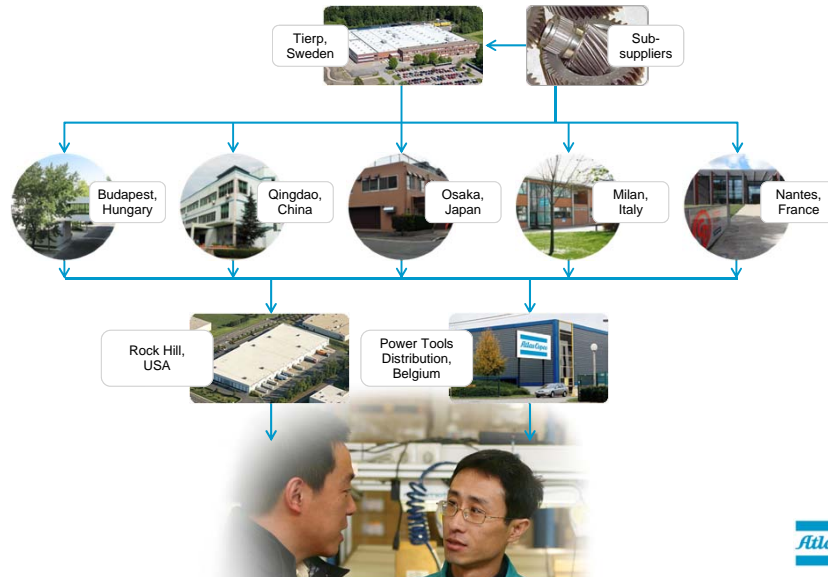
## Operational agility



## Industrial Technique organization

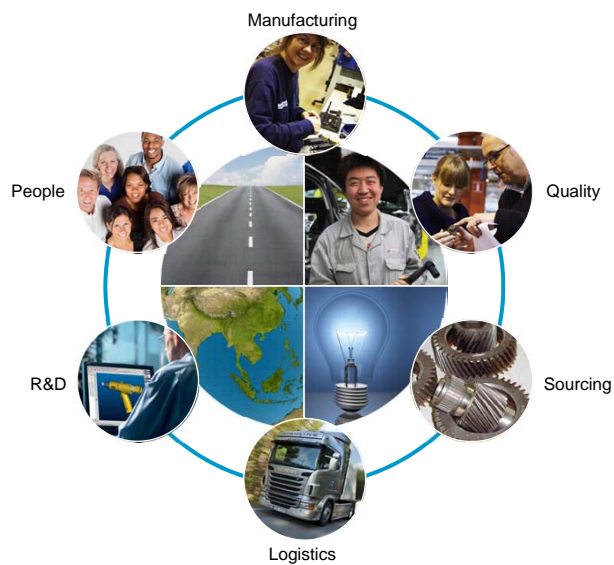


## Operational footprint and logistic flows



7 Atlas Copco Capital Markets Day - November 15, 2012

## Operational agility



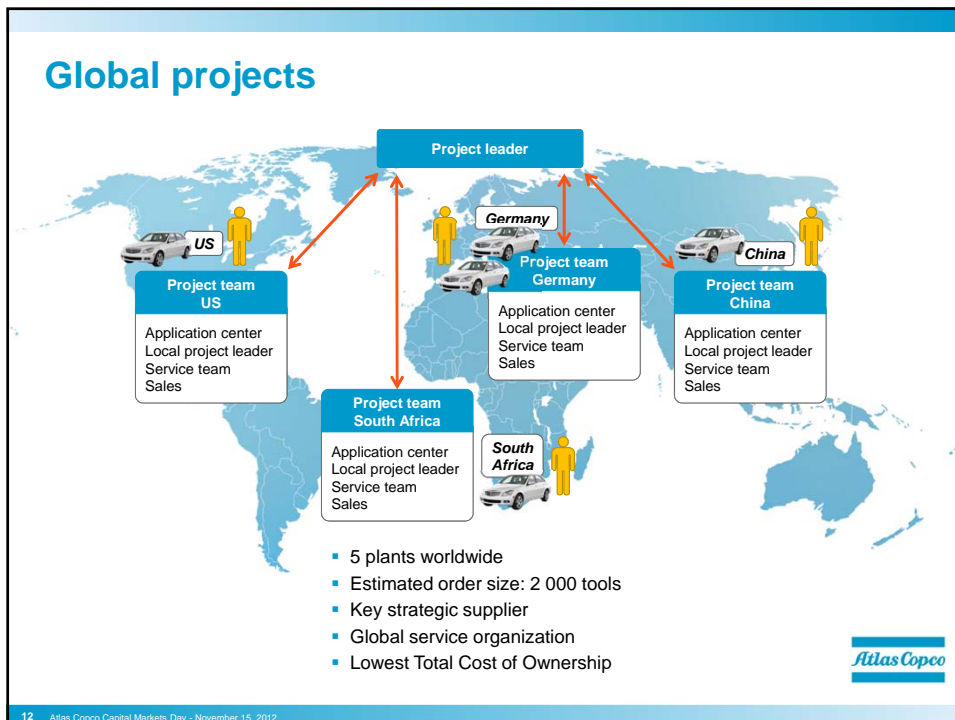
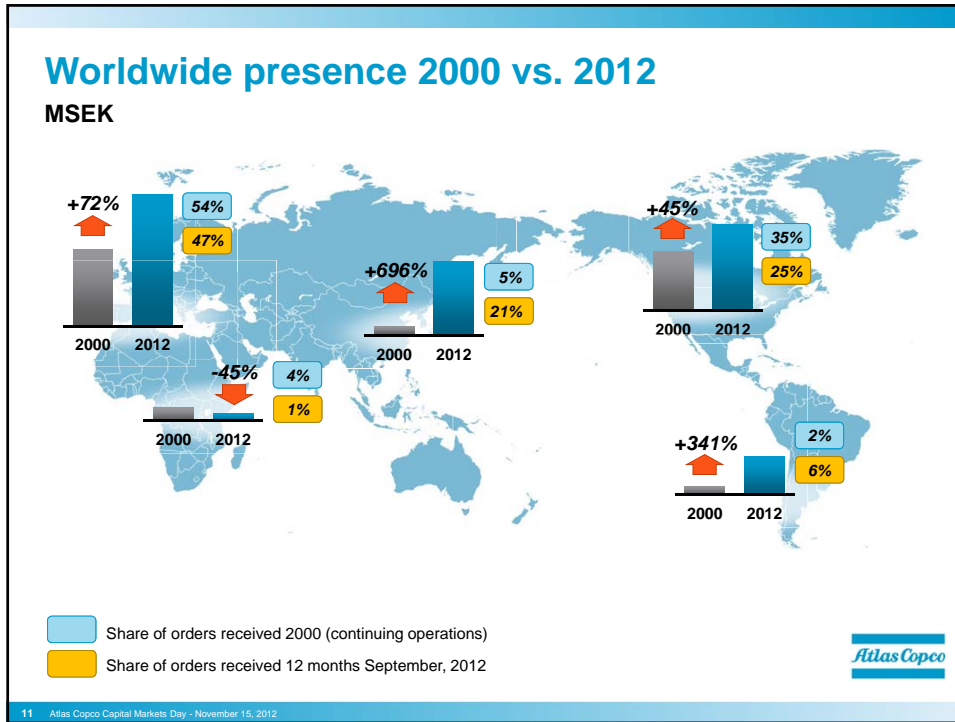
8 Atlas Copco Capital Markets Day - November 15, 2012

## Global coverage



## Global coverage





## Market transformation

Atlas Copco

13 Atlas Copco Capital Markets Day - November 15, 2012

## Market transformation



Atlas Copco

14 Atlas Copco Capital Markets Day - November 15, 2012

## Market transformation



Wheel multiple



Tensor ST



Tensor Revo



Power Focus 6000



ST wrench



MicroTorque



## A tour into the plant of the future





## Adhesives equipment



17 Atlas Copco Capital Markets Day - November 15, 2012



### SCA company information:

Employees worldwide:	390
Share of exports:	approx. 65%
Centers worldwide:	28

### SCA headquarters Bretten, Germany:

Innovation center:	470 m <sup>2</sup>
Technical center with:	7 robots
Trainings:	2 fully equipped rooms, incl. robots



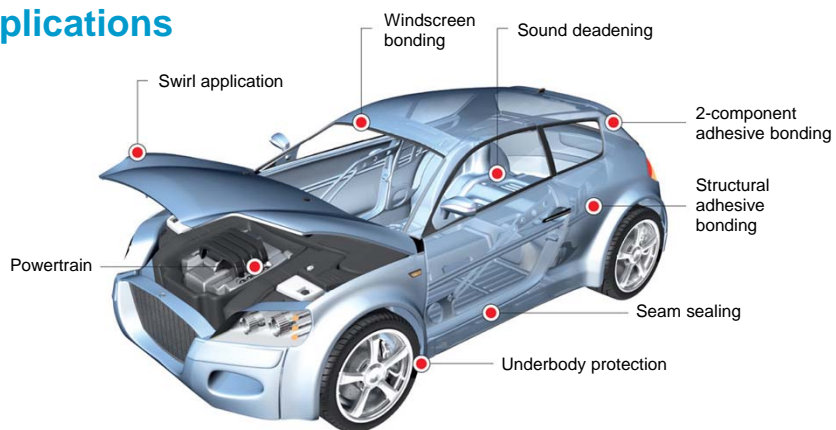
18 Atlas Copco Capital Markets Day - November 15, 2012

## Why are we investing in adhesives?



19 Atlas Copco Capital Markets Day - November 15, 2012

## Applications



Body shop



Paint



Assembly



Powertrain



Composite



20 Atlas Copco Capital Markets Day - November 15, 2012

## Strategic growth opportunities



21 Atlas Copco Capital Markets Day - November 15, 2012

## Summary



1. We invest in our own people globally



2. Heavy investment in new technology and innovation



3. Transform market segment, with ROI sales



4. Investment in competence throughout the organization



5. We service what we sell



6. We focus on organic growth and complementary acquisitions



22 Atlas Copco Capital Markets Day - November 15, 2012

**Committed to  
sustainable productivity.**



23 Atlas Copco Capital Markets Day - November 15, 2012

A large version of the Atlas Copco logo, featuring the company name in a blue serif font, centered between two thick horizontal blue bars.