



The face of interaction



Equipment Rental e-Commerce

Ellen Steck

Capital Markets Day

Feb. 19-20, 2001

The logo for Atlas Copco, featuring the company name in a blue, italicized serif font, centered between two horizontal blue bars.

Atlas Copco

To Prosper & Grow

We will Lead in this Technical Revolution with EFFICIENCIES in...

- ▶ 1. Strategic Accounts
 - ▾ E-FACTS
- ▶ 2. Employees
 - ▾ Online Open Enrollment
- ▶ 3. General Customers/Prospects
 - ▾ Web Site



1. Efficiencies for Strategic Accounts

E-FACTS



Atlas Copco

▶ Customer Benefits

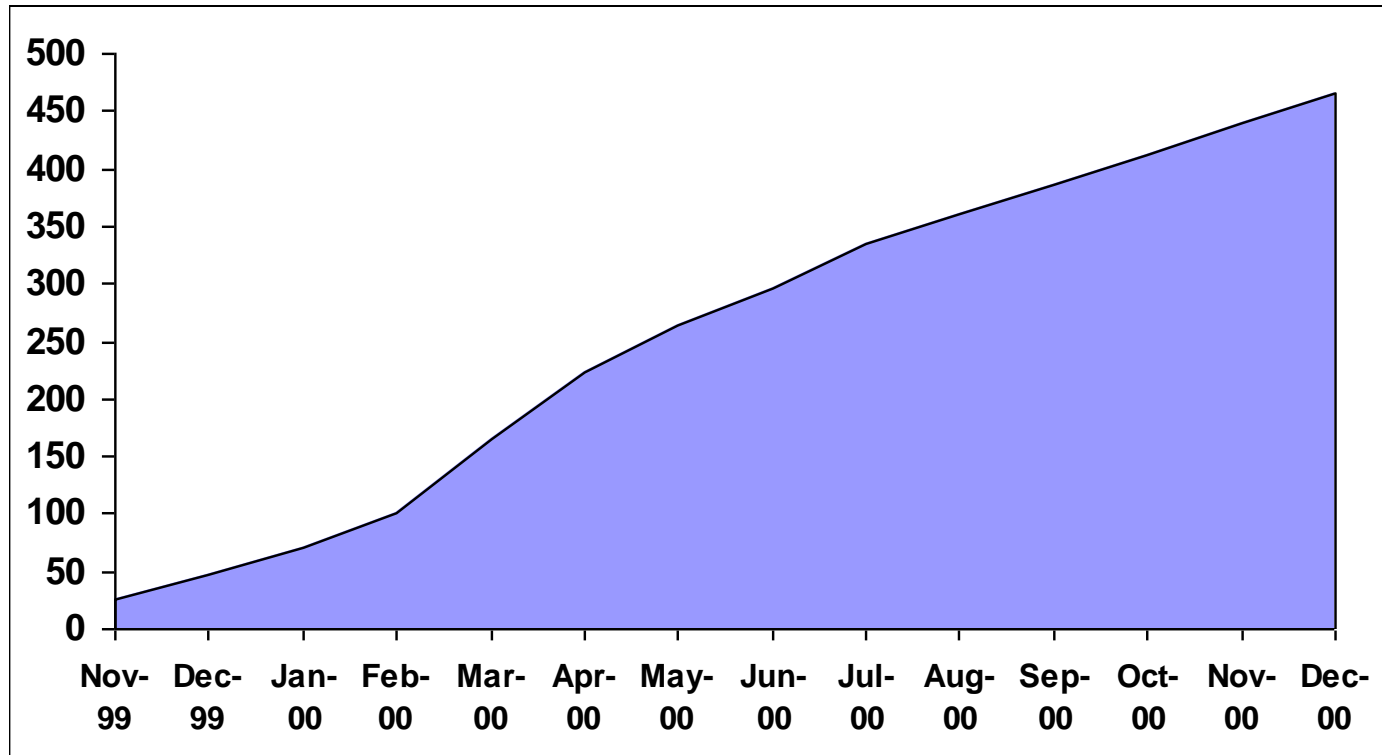
- ▶ 24 Hour access
- ▶ Available at customers' convenience
- ▶ Manage multiple job sites, EASILY
- ▶ User friendly environment (point and click)

▶ RSC Benefits

- ▾ Defined National Account Program (more to sell)
- ▾ Better use of resources
- ▾ Became part of a process
- ▾ Customers ask for it!

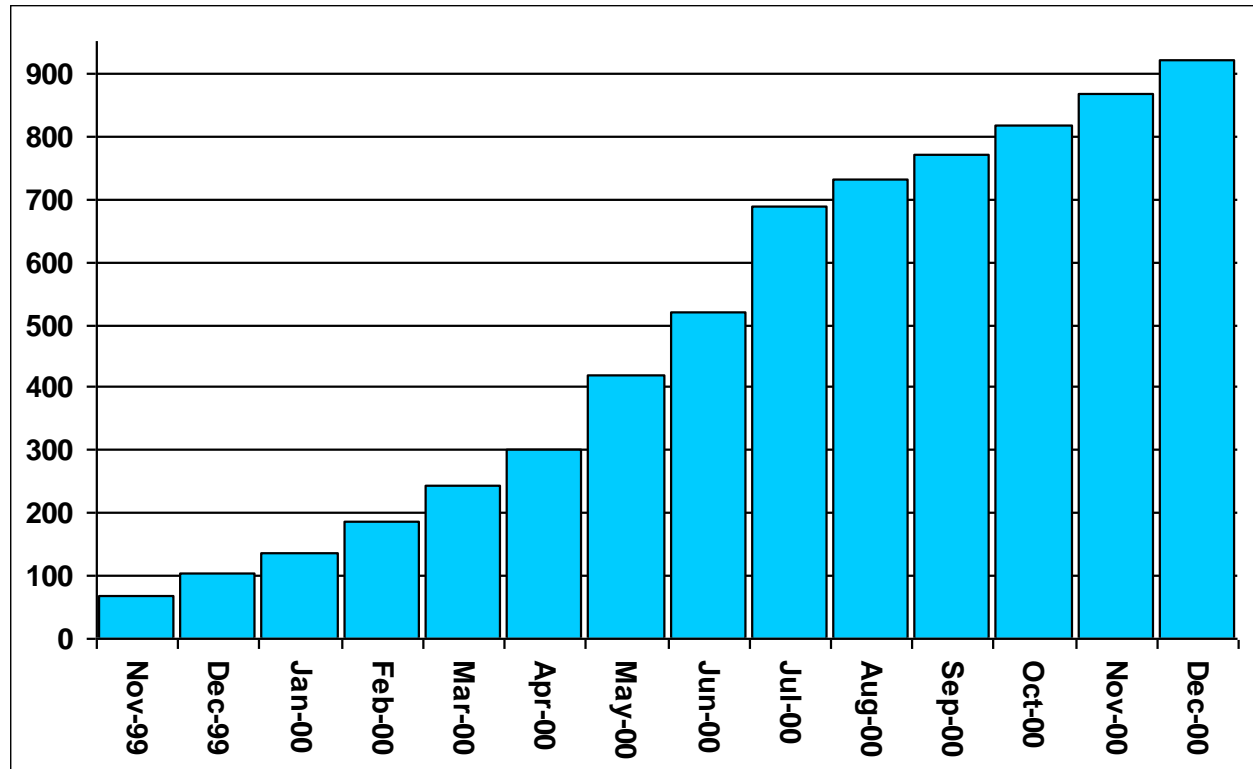
E-Facts Users

- ▶ November 1999 to December 2000



E-Facts System Hits

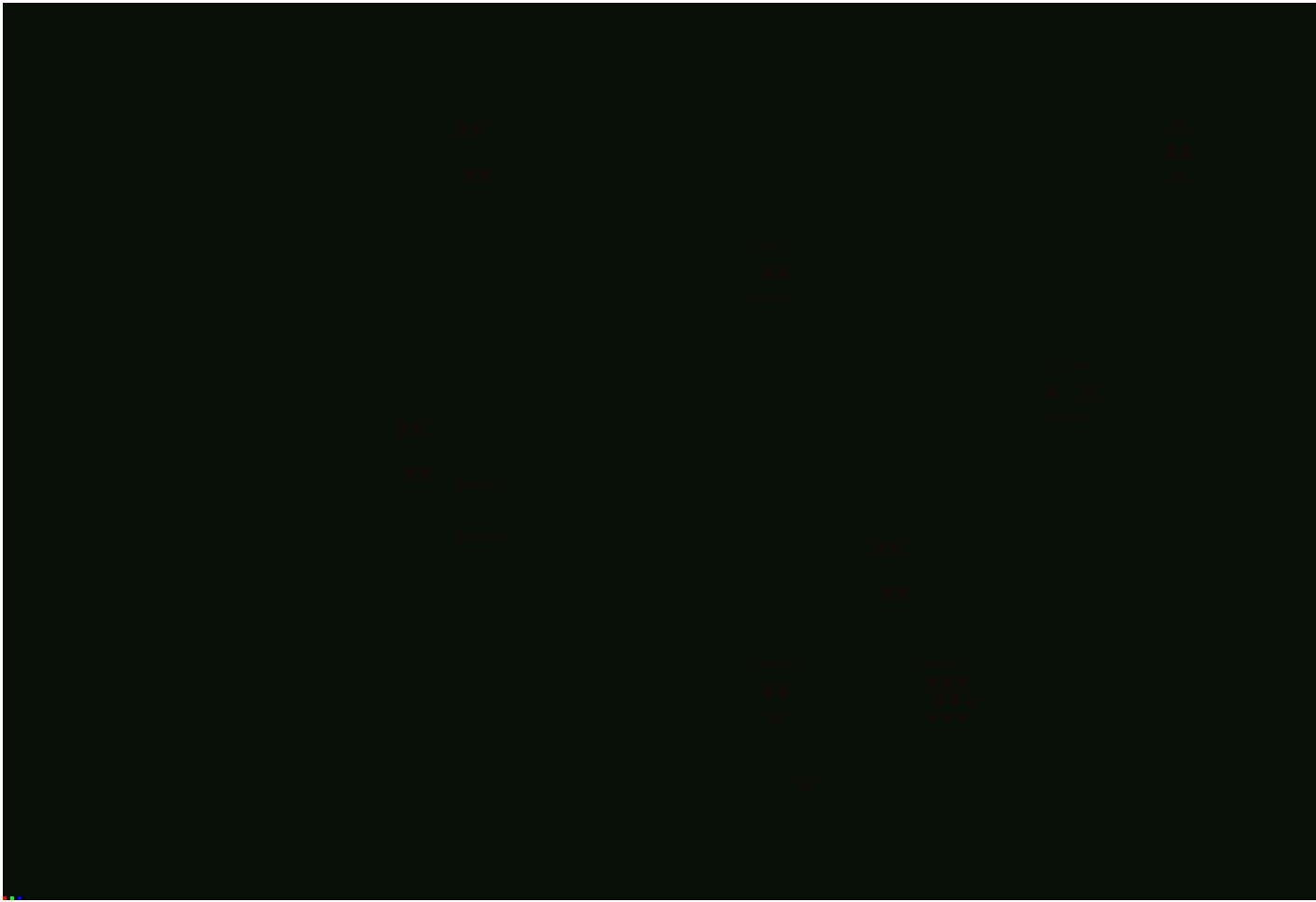
- ▶ November 1999 to December 2000

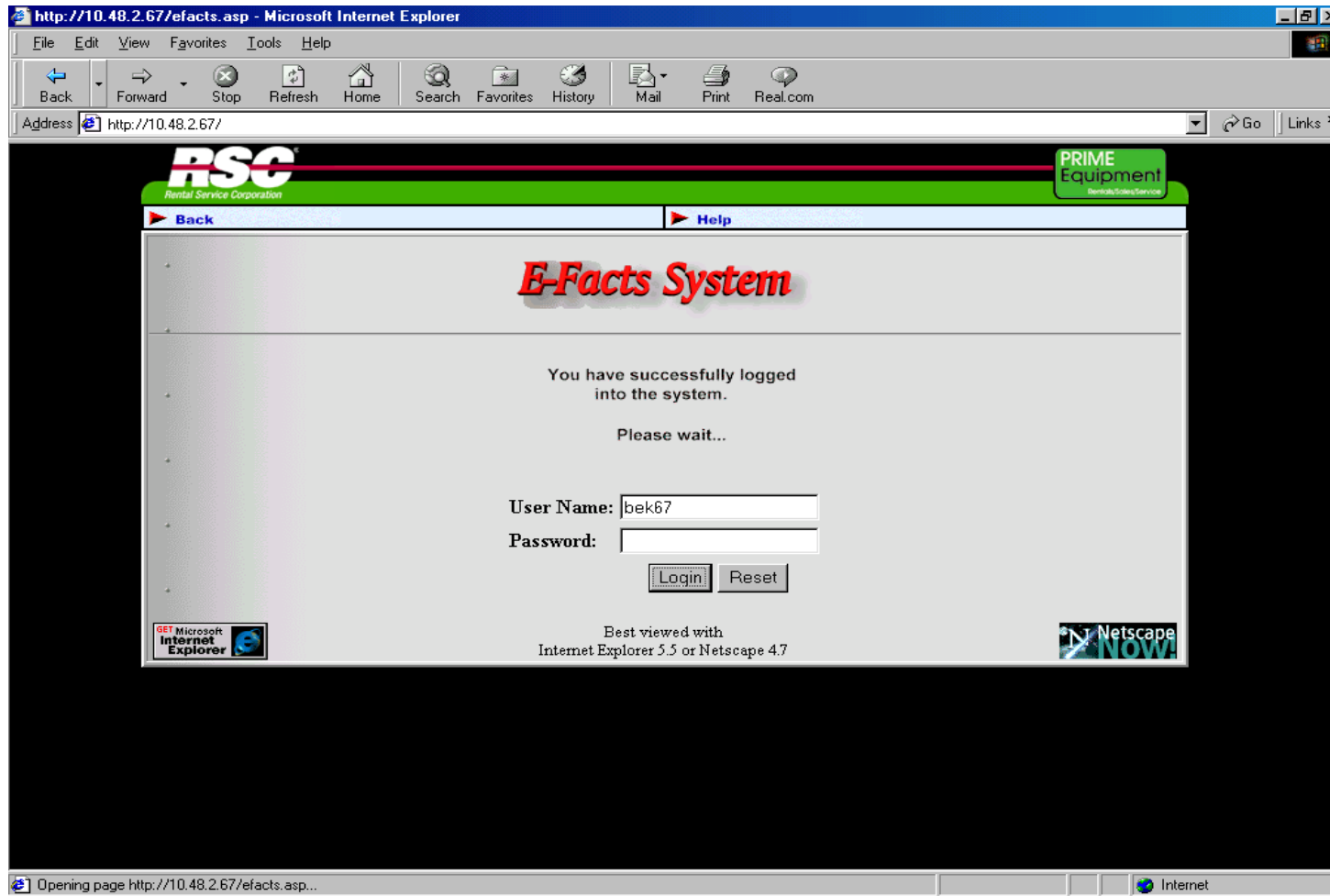


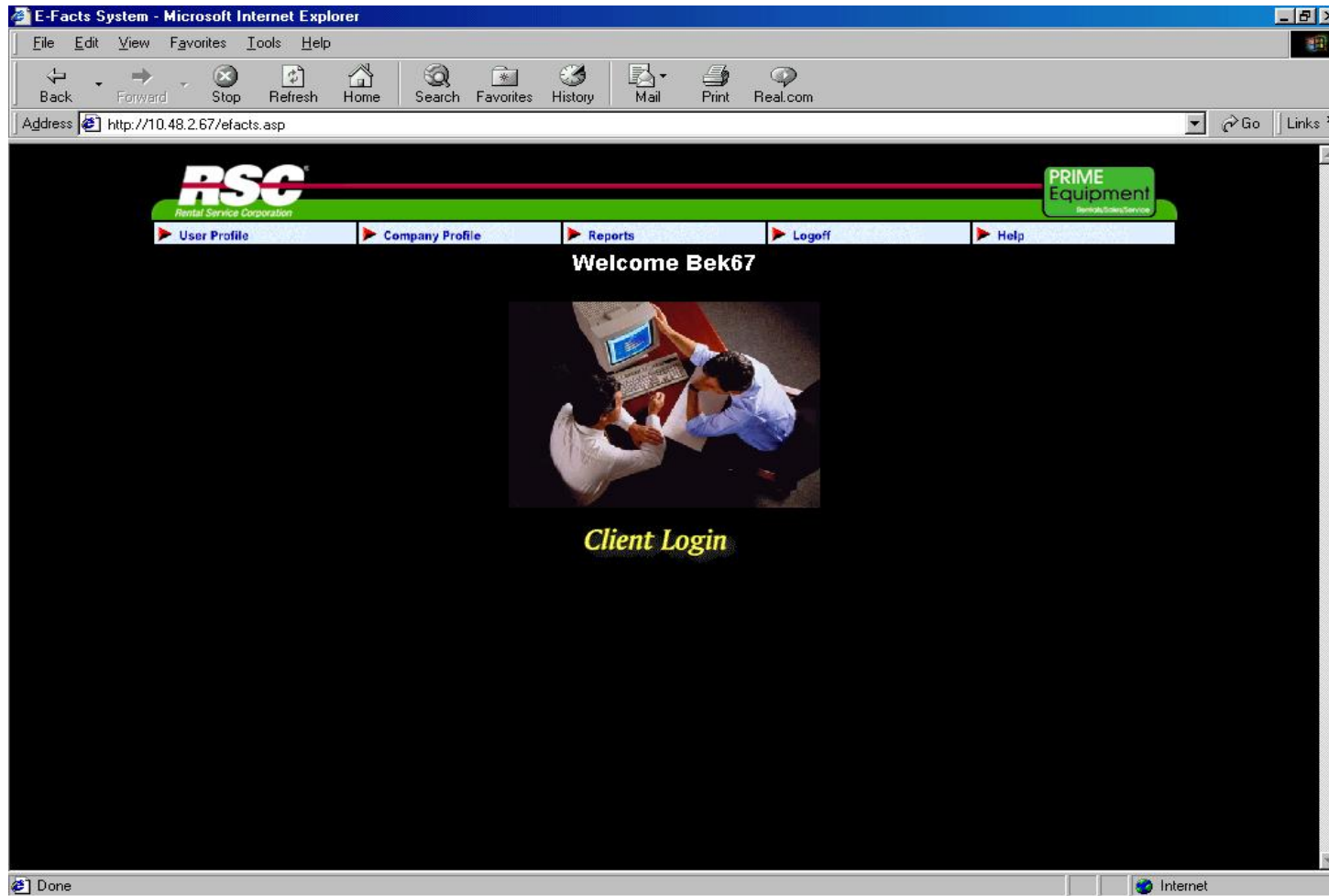
E-Facts users - sample

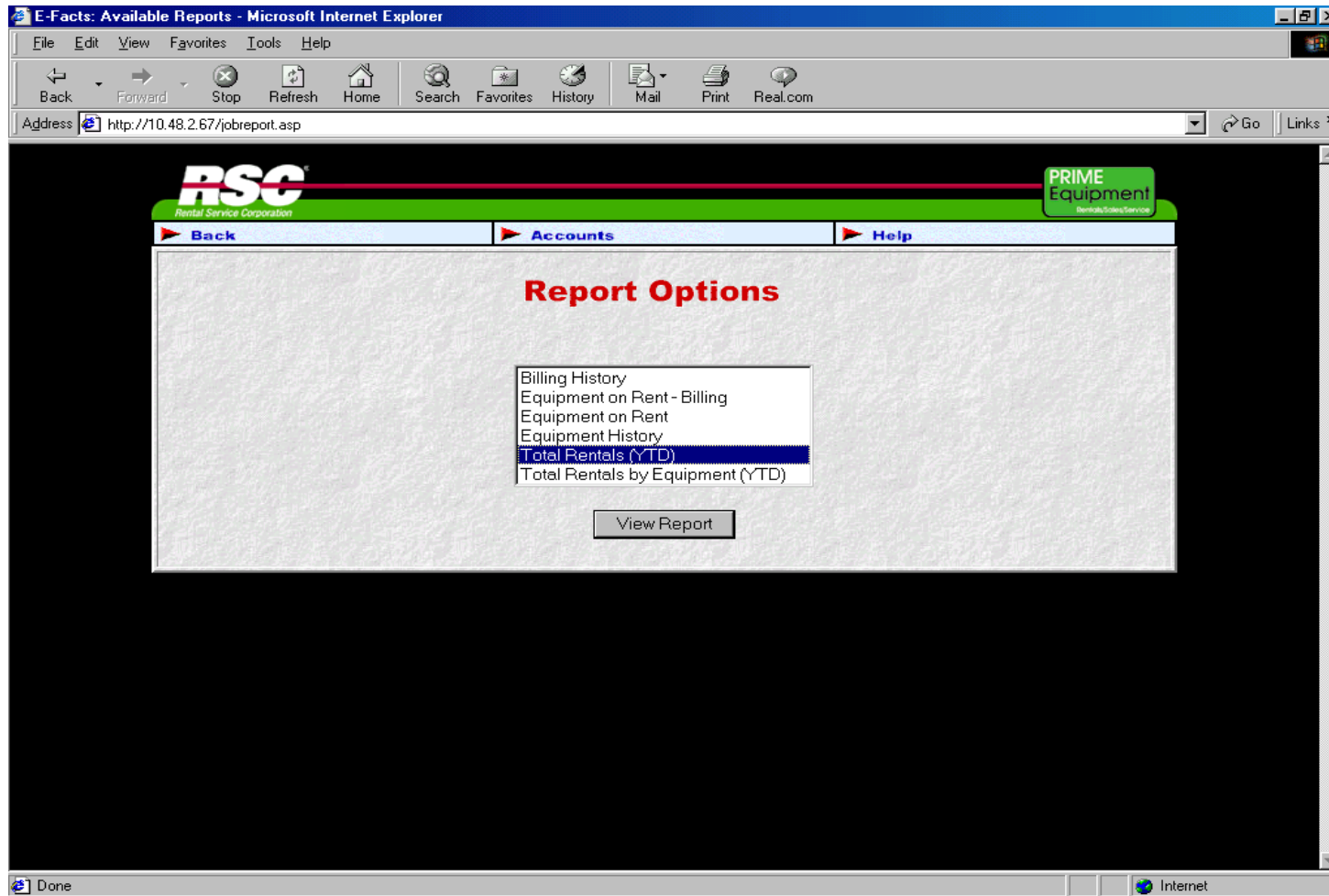


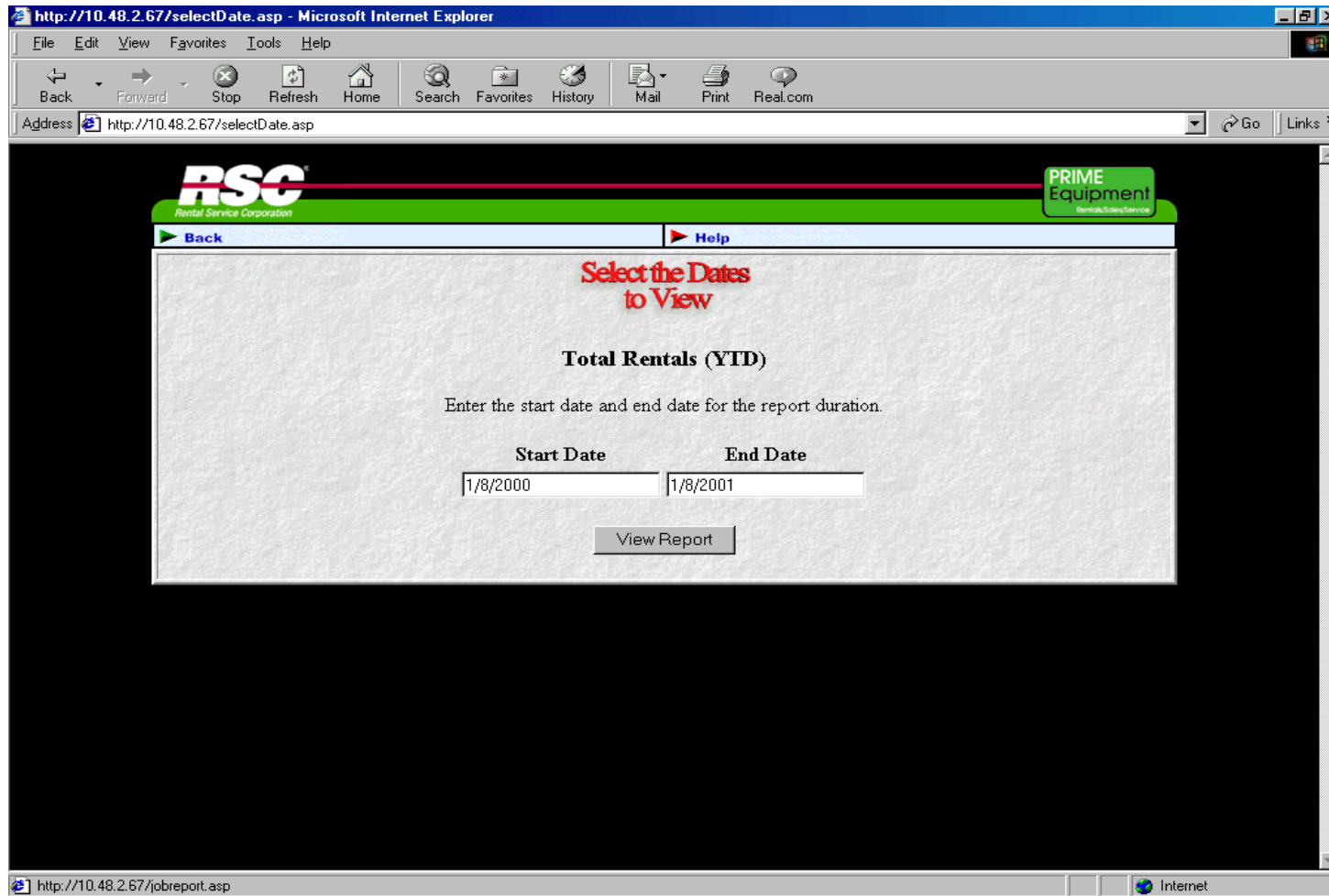
- ▶ Video Clip of Customer Testimony...

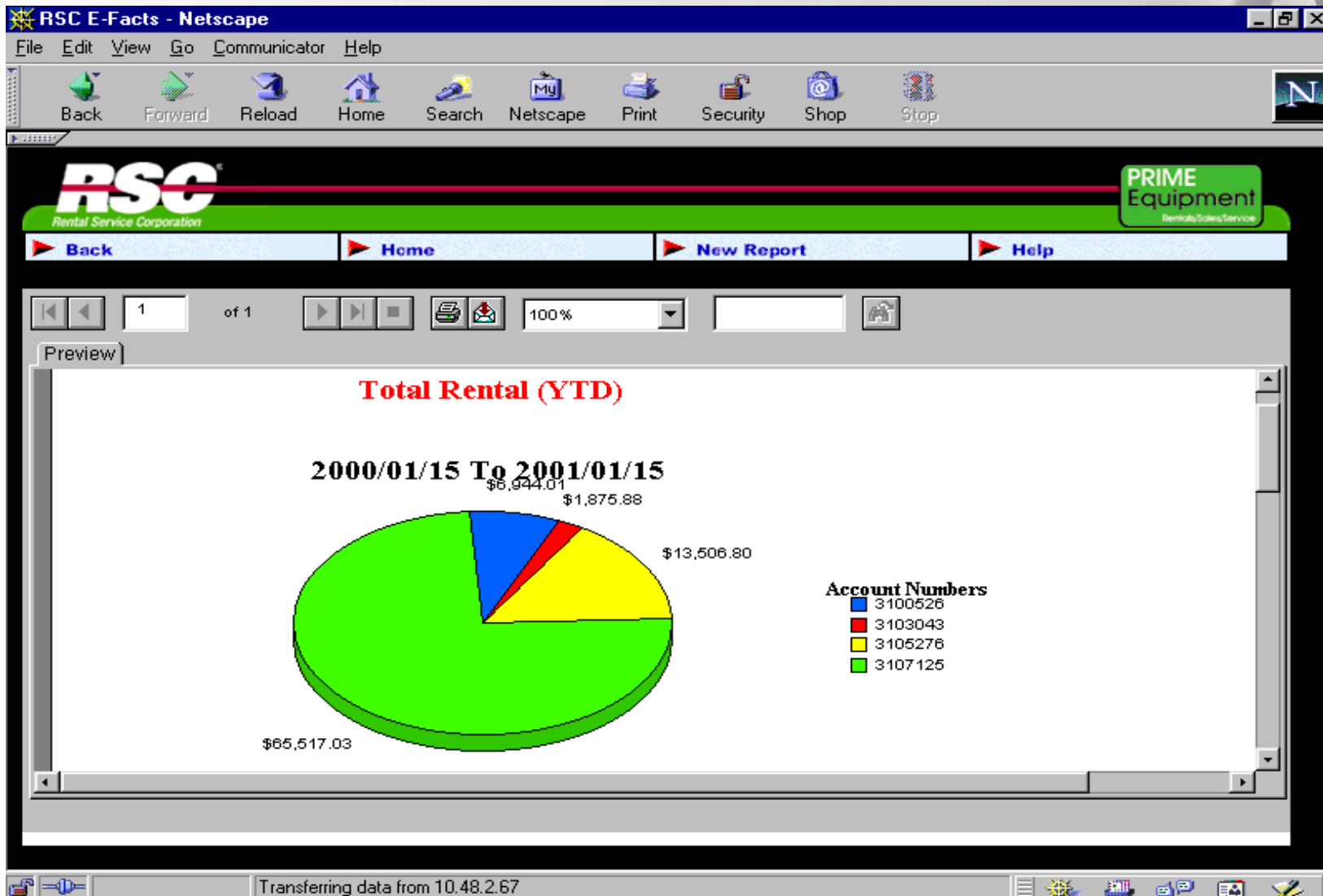












RSC E-Facts - Microsoft Internet Explorer

Address: http://10.48.2.67/ReportAction2.asp?startdate=1%2F8%2F2000&enddate=1%2F8%2F2001&submit2=View+Report

RSC Rental Service Corporation **PRIME Equipment** Demos/Sales/Service

Back Home New Report Graph Help

100% 1 of 1+

Total Rentals (YTD)

Date Range 2000/01/08 To 2001/01/08

Invoice Date	Customer Code	Loc	RSC Branch Name	Invoice	P. O. #	Rental Amount	Sales Amount	Other Amount	Total Invoice Amount
2000/01/11	6401267	061	Demopolis	4330889-04	96252-F-0535	800.00		0.00	800.00
2000/01/17	6401267	061	Demopolis	4463921-03	96252-F-0592	2,505.00		0.00	2,505.00
2000/01/17	6401267	061	Demopolis	4580459-02	.	2,610.00		0.00	2,610.00
2000/01/19	6401267	061	Demopolis	4502498-04	.	690.00		0.00	690.00
2000/02/08	6401267	061	Demopolis	4330889-05	96252-F-0535	800.00		0.00	800.00
2000/02/14	6401267	061	Demopolis	4463921-04	96252-F-0592	2,505.00		0.00	2,505.00
2000/02/16	6401267	061	Demopolis	4502498-05	.	690.00		0.00	690.00
2000/02/24	6401267	061	Demopolis	4893260-01	99046-F-0771	1,960.00		0.00	1,960.00
2000/02/25	6401267	061	Demopolis	4900394-01	99047-F-0761	400.00		0.00	400.00
2000/02/28	6401267	061	Demopolis	4770195-02	99046-F-0812	580.00		0.00	580.00
2000/02/28	6401267	061	Demopolis	4463921-05	96252-F-0592	-305.00		0.00	-305.00
2000/02/29	6401267	061	Demopolis	4916859-01	99047-F-0795	650.00		0.00	650.00
2000/03/07	6401267	061	Demopolis	4330889-06	96252-F-0535	800.00		0.00	800.00
2000/03/09	6401267	061	Demopolis	4963990-01	99046-F-0830	140.00		0.00	140.00
2000/03/09	6401267	061	Demopolis	4463921-06	96252-F-0592	-305.00		0.00	-305.00
2000/03/09	6401267	061	Demopolis	4463921-07	96252-F-0592	-305.00		0.00	-305.00
2000/03/13	6401267	061	Demopolis	4463921-08	96252-F-0592	2,505.00		0.00	2,505.00
2000/03/15	6401267	061	Demopolis	4502498-06	.	690.00		0.00	690.00

Done Internet



2. Employee Efficiencies

Online Open-Enrollment



Employee Login - Microsoft Internet Explorer

File Edit View Favorites Tools Help

Back Forward Stop Refresh Home Search Favorites History Mail Print Real.com

Address <http://s-ecommerce/hrbenefits/login/login.asp> Go Links >>

RSC
Rental Service Corporation

PRIME
Equipment
Benefits/Claims Service

Benefits Open Enrollment Login

Please complete the following to access your personal benefits account information.

Social Security Number:

PIN Number:

(PIN Number is located in your ISP Personalized Fact Sheet)

*If you have any questions or need further assistance
you may contact the ISP Benefits Department
by phone at 1-877-789-6062 [or via email.](#)*

Over 3,000 Enrollments!

Done Local intranet



3. Efficiencies for General Customers & Prospects

Web Site



Atlas Copco

Web Site Efficiencies


- ▶ Individual Store Pages
- ▶ Click-to-Connect

RSC & PRIME - Microsoft Internet Explorer


File Edit View Favorites Tools Help

Back Forward Stop Refresh Home Search Favorites History Mail Print Real.com

Address http://209.235.22.106:8080/home/index.asp Go Links

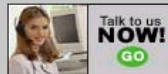


WEATHER enter city or zip



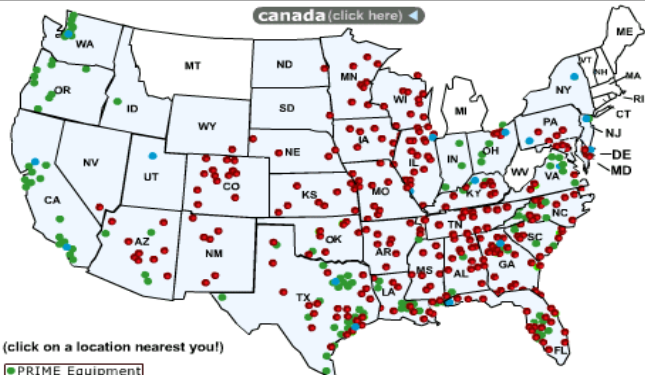
December 08, 2000

- Home
- Rental
- Used Equipment
- New Equipment
- Managed Services
- Industrial Services
- Strategic Accounts
- PRIME Energy
- Tools & Supplies
- Locations
- Careers
- Company Info.
- Contact Us



A STRATEGIC MERGER EQUIPPED TO SERVE YOU BETTER...

canada [\(click here\)](#)



(click on a location nearest you!)


- PRIME Equipment
- RSC Location
- PRIME Energy

mexico [\(click here\)](#)

>> News <<

RSC announces 10 completed acquisitions [read more](#)

PRIME opens it's 5th Store in Mexico [read more](#)



[click here](#)

Copyright ©2000, Rental Service Corporation & PRIME Service, INC. - Usage & Agreement - Privacy Policy Companies within the Atlas Copco Group

Done Internet

RSC & PRIME - Microsoft Internet Explorer

File Edit View Favorites Tools Help

Back Forward Stop Refresh Home Search Favorites History Mail Print Real.com

Address http://www.prime-equip.com/home/index.asp

WEATHER enter city or zip

PRIME Equipment
Rental/Service

January 10, 2001

- Home
- Rental
- Used Equipment
- New Equipment
- Managed Services
- Industrial Services
- Strategic / E-FACTS
- PRIME Energy
- Tools & Supplies
- Locations
- Careers
- Company Info.
- Contact Us

Featured Location
[Click Here](#)

A STRATEGIC MERGER EQUIPPED TO SERVE YOU BETTER...

canada [\(click here\)](#)
X

Arizona

(Click on a location nearest you!)

- Gilbert
- Globe
- Phoenix, Cave Creek Rd.
- Phoenix, Grand Ave.
- Phoenix, N. 27th St.
- Phoenix, S. Black Canyon
- Prescott
- Safford
- Scottsdale
- Show Low
- Sierra Vista
- Tempe
- Tucson, 4065 E. Illinois St.
- Tucson, N. Casa Grande HWY.
- Tucson, Prince Rd.
- Yuma

- Bullhead City
- Casa Grande
- Cave Creek
- Flagstaff

- RSC
- Prime Equipment
- Prime Energy

(click on a location nearest you!)

- PRIME Equipment
- RSC Location
- PRIME Energy

mexico [\(click here\)](#)

>> News <<

Merger of PRIME and RSC Creates Powerhouse in Equipment Rental Industry. [read more](#)

RSC Receives Award for Excellence in Mobile Computing and Wireless Data Communications. [read more](#)

Rental Service Corporation Unveils Shared PRIME and RSC Web Site [read more](#)

[click here](#)

Copyright ©2000, Rental Service Corporation & PRIME Service, INC. - [Usage & Agreement](#) - [Privacy Policy](#) Companies within the Atlas Copco Group


http://www.prime-equip.com/merger/index.asp

RSC - Gilbert - Microsoft Internet Explorer


File Edit View Favorites Tools Help

Back Forward Stop Refresh Home Search Favorites History Mail Print Real.com

Address <http://www.prime-equip.com/store.asp?StoreID=390> Go Links >>




WEATHER enter city or zip



January 10, 2001
▶ [Locations Search](#)
▶ [List Of All Locations](#)
▶ [Clickable Store Map](#)
▶ [All Local Events](#)


- Home
- Rental
- Used Equipment
- New Equipment
- Managed Services
- Industrial Services
- Strategic / E-FACTS
- PRIME Energy
- Tools & Supplies
- ▶ **Locations**
- Careers
- Company Info.
- Contact Us




Address: 215 E. Baseline Road
Gilbert, AZ 85233
[click here for driving directions](#)

Phone: 480-892-1155
Fax: 480-892-5535
Email: Rbunning@rentalservice.com

General Manager: Ron Bunning
Hours: Mon-Fri 6:00am - 5:00pm





Store Information	News and Local Events
<p>Quality Service for Rental and Sales! We carry an extensive inventory of late-model, name brand equipment from the most respected and trusted manufacturers in the business. You can rent with confidence from us! Looking for Used Equipment? Let us know what you are looking for, we will help you find what you need!</p>	<p>We will EARN your Business! Please stop by and visit our merchandise showroom. From caution tape to tool boxes, we want to be your one stop shop. Quality Service is Our Difference! This is our commitment to you. No matter how big or small the job, our staff of highly trained individuals are committed to meeting and EXCEEDING your equipment rental and sales needs, Everyday. Thank you, in advance, for choosing Rental Service Corporation.</p>

Copyright ©2000, Rental Service Corporation & PRIME Service, INC. - Usage & Agreement - Privacy Policy
Companies within the Atlas Copco Group

RSC & PRIME - Microsoft Internet Explorer

File Edit View Favorites Tools Help

Back Forward Stop Refresh Home Search Favorites History Mail Print Real.com

Address http://rentalservice.com/home/index.asp

WEATHER enter city or zip

PRIME Equipment
Rental/Lease/Service

January 10, 2001

- Home
- Rental
- Used Equipment
- New Equipment
- Managed Services
- Industrial Services
- Strategic / E-FACTS
- PRIME Energy
- Tools & Supplies
- Locations
- Careers
- Company Info.
- Contact Us

Talk to us NOW!
GO

Featured Location
Click Here

A STRATEGIC MERGER EQUIPPED TO SERVE YOU BETTER...

canada (click here)

Arizona

(Click on a location nearest you!)

- Gilbert
- Globe
- Phoenix, Cave Creek Rd.
- Phoenix, Grand Ave.
- Phoenix, N. 27th St.
- Phoenix, S. Black Canyon
- Prescott
- Safford
- Scottsdale
- Show Low
- Sierra Vista
- Tempe
- Tucson, 4065 E. Illinois St.
- Tucson, N. Casa Grande HWY.
- Tucson, Prince Rd.
- Yuma

● Bullhead City
● Casa Grande
● Cave Creek
● Flagstaff

● RSC
● Prime Equipment
● Prime Energy

(click on a location nearest you!)

- PRIME Equipment
- RSC Location
- PRIME Energy

mexico (click here)

>> News <<

Merger of PRIME and RSC Creates Powerhouse in Equipment Rental Industry. [read more](#)

RSC Receives Award for Excellence in Mobile Computing and Wireless Data Communications. [read more](#)

Rental Service Corporation Unveils Shared PRIME and RSC Web Site [read more](#)

PRIME Energy Systems
[click here](#)

Copyright ©2000, Rental Service Corporation & PRIME Service, INC. - Usage & Agreement - Privacy Policy Companies within the Atlas Copco Group


http://rentalservice.com/copyright.asp

RSC - Cave Creek - Microsoft Internet Explorer


File Edit View Favorites Tools Help

Back Forward Stop Refresh Home Search Favorites History Mail Print Real.com

Address <http://rentalservice.com/store.asp?StoreID=402> Go Links >>




WEATHER enter city or zip



January 10, 2001

[Locations Search](#)
[List Of All Locations](#)
[Clickable Store Map](#)
[All Local Events](#)


- Home
- Rental
- Used Equipment
- New Equipment
- Managed Services
- Industrial Services
- Strategic / E-FACTS
- PRIME Energy
- Tools & Supplies
- Locations
- Careers
- Company Info.
- Contact Us

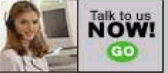


Address: 6921 East Cave Creek Rd.
Cave Creek, AZ 85331
[click here for driving directions](#)

Phone: 480-488-3733
Fax: 480-488-5343
Email: Hstodghill@rentalservice.com

General Manager: Hank Stodghill
Hours: Mon-Fri 6:00am - 5:00pm





Store Information	News and Local Events
<p>Quality Service for Rental and Sales! We carry an extensive inventory of late-model, name brand equipment from the most respected and trusted manufacturers in the business. You can rent with confidence from us! Looking for Used Equipment? Let us know what you are looking for, we will help you find what you need!</p>	<p>We will EARN your Business! Please stop by and visit our merchandise showroom. From caution tape to tool boxes, we want to be your one stop shop. Thank you, in advance, for choosing Rental Service Corporation. Quality Service is Our Difference! This is our commitment to you. No matter how big or small the job, our staff of highly trained individuals are committed to meeting and EXCEEDING your equipment rental and sales needs, Everyday. Friday hours until 6:00 PM</p>

Copyright ©2000, Rental Service Corporation & PRIME Service, INC. - Usage & Agreement - Privacy Policy
Companies within the Atlas Copco Group

Done Internet

RSC & PRIME - Microsoft Internet Explorer

File Edit View Favorites Tools Help

Back Forward Stop Refresh Home Search Favorites History Mail Print Real.com

Address http://www.prime-equip.com/home/index.asp

WEATHER enter city or zip

PRIME Equipment
Rental/Tools/Service

January 11, 2001

- Home
- Rental
- Used Equipment
- New Equipment
- Managed Services
- Industrial Services
- Strategic / E-FACTS
- PRIME Energy
- Tools & Supplies
- Locations
- Careers
- Company Info.
- Contact Us

Talk to us NOW!
GO

Featured Location
Click Here

A STRATEGIC MERGER EQUIPPED TO SERVE YOU BETTER...

canada (click here)

Arizona

(Click on a location nearest you!)

- Gilbert
- Globe
- Phoenix, Cave Creek Rd.
- Phoenix, Grand Ave.
- Phoenix, N. 27th St.
- Phoenix, S. Black Canyon
- Prescott
- Safford
- Scottsdale
- Show Low
- Sierra Vista
- Tempe
- Tucson, 4065 E. Illinois St.
- Tucson, N. Casa Grande HWY.
- Tucson, Prince Rd.
- Yuma

● Bullhead City
● Casa Grande
● Cave Creek
● Flagstaff

● RSC
● Prime Equipment
● Prime Energy

(click on a location nearest you!)

- PRIME Equipment
- RSC Location
- PRIME Energy

mexico (click here)

>> News <<

Merger of PRIME and RSC Creates Powerhouse in Equipment Rental Industry. [read more](#)

RSC Receives Award for Excellence in Mobile Computing and Wireless Data Communications. [read more](#)

Rental Service Corporation Unveils Shared PRIME and RSC Web Site [read more](#)

PRIME Energy Systems
[click here](#)

Copyright ©2000, Rental Service Corporation & PRIME Service, INC. - Usage & Agreement - Privacy Policy Companies within the Atlas Copco Group


Done Internet

RSC - Phoenix - Microsoft Internet Explorer


File Edit View Favorites Tools Help

Back Forward Stop Refresh Home Search Favorites History Mail Print Real.com

Address <http://www.prime-equip.com/store.asp?StoreID=399> Go Links >>




WEATHER enter city or zip



January 11, 2001
▶ [Locations Search](#)
▶ [List Of All Locations](#)
▶ [Clickable Store Map](#)
▶ [All Local Events](#)

- Home
- Rental
- Used Equipment
- New Equipment
- Managed Services
- Industrial Services
- Strategic / E-FACTS
- PRIME Energy
- Tools & Supplies
- ▶ **Locations**
- Careers
- Company Info.
- Contact Us



Address: 21445 North 27th Ave.
Phoenix, AZ 85027
[click here for driving directions](#)

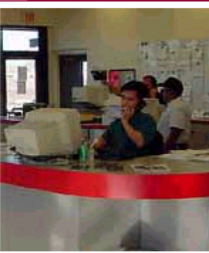
Phone: 623-879-6625

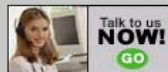
Fax: 623-879-6576

Email: Ataylor@rentalservice.com

General Manager: Aaron Taylor

Hours: Mon-Fri 5:30am - 5:00pm





Store Information

Quality Service for Rental and Sales!
We carry an extensive inventory of late-model, name brand equipment from the most respected and trusted manufacturers in the business. You can rent with confidence from us! Looking for Used Equipment? Let us know what you are looking for, we will help you find what you need!

News and Local Events

We will EARN your Business!
Please stop by and visit our merchandise showroom. From caution tape to tool boxes, we want to be your one stop shop. Thank you, in advance, for choosing Rental Service Corporation. Quality Service is Our Difference! This is our commitment to you. No matter how big or small the job, our staff of highly trained individuals are committed to meeting and EXCEEDING your equipment rental and sales needs, Everyday.

Copyright ©2000, Rental Service Corporation & PRIME Service, INC. - Usage & Agreement - Privacy Policy
Companies within the Atlas Copco Group

RSC & PRIME - Microsoft Internet Explorer

File Edit View Favorites Tools Help

Back Forward Stop Refresh Home Search Favorites History Mail Print Real.com

Address <http://www.prime-equip.com/home/index.asp> Go Links

WEATHER enter city or zip

PRIME Equipment
Rental/Tools/Service

January 10, 2001

- Home
- Rental
- Used Equipment
- New Equipment
- Managed Services
- Industrial Services
- Strategic / E-FACTS
- PRIME Energy
- Tools & Supplies
- Locations
- Careers
- Company Info.
- Contact Us

Talk to us NOW!
GO

Featured Location
Click Here

A STRATEGIC MERGER EQUIPPED TO SERVE YOU BETTER...

canada (click here)

Washington

- Bellingham
- Ellensburg
- Everett
- Kent
- Moses Lake
- Mt. Vernon
- Redmond
- Seattle
- Tacoma

● RSC

● Prime Equipment

● Prime Energy

(click on a location nearest you!)

● PRIME Equipment

● RSC Location

● PRIME Energy

mexico (click here)

>> News <<

Merger of PRIME and RSC Creates Powerhouse in Equipment Rental Industry. [read more](#)

RSC Receives Award for Excellence in Mobile Computing and Wireless Data Communications. [read more](#)

Rental Service Corporation Unveils Shared PRIME and RSC Web Site [read more](#)

PRIME Energy

[click here](#)


Copyright ©2000, Rental Service Corporation & PRIME Service, INC. - Usage & Agreement - Privacy Policy Companies within the Atlas Copco Group

PRIME Energy - Kent - Microsoft Internet Explorer

File Edit View Favorites Tools Help

Back Forward Stop Refresh Home Search Favorites History Mail Print Real.com

Address <http://www.prime-equip.com/store.asp?StoreID=853> Go Links >>

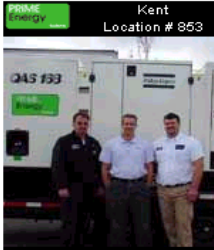


January 10, 2001

- Home
- Rental
- Used Equipment
- New Equipment
- Managed Services
- Industrial Services
- Strategic / E-FACTS
- PRIME Energy
- Tools & Supplies
- Locations
- Careers
- Company Info.
- Contact Us

WEATHER enter city or zip

[Locations Search](#) |
 [List Of All Locations](#) |
 [Clickable Store Map](#) |
 [All Local Events](#)



Address: 21260 76th Avenue South
Kent, WA 98032
[click here for driving directions](#)


Phone: 253-872-2567

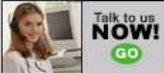

Fax: 253-872-6910

Email: s353mgr@prime-equip.com

General Manager: Art Kercher

Hours: Mon-Fri 8:00am - 5:00pm



Store Information

We Serve WA, OR, ID, MT and WY!
Prime Energy Systems (formerly Atlas Copco Rental) offers generators, temperature control equipment and 100% oil-free air service. Our location is conveniently located just south of Seattle and brings customers a single source for energy requirements in WA, OR, ID, MT and WY. We know how critical the rental of utility equipment is to our customers and we're ready for any emergency or planned rental requirement from exploratory application assistance to middle-of-the-night deliveries. We're ready to respond 24-hours a day.

News and Local Events

RSC, PRIME Equipment and PRIME Energy Systems offer a wide variety of equipment rentals, sales and service to the construction, manufacturing, industrial and residential markets. With over 570 locations in the US, Canada, Mexico and Puerto Rico, we've got your equipment needs covered. Please use the phone number listed above for specific pricing and availability in this area.

Copyright ©2000, Rental Service Corporation & PRIME Service, INC. - Usage & Agreement - Privacy Policy Companies within the Atlas Copco Group

Internet

RSC & PRIME - Microsoft Internet Explorer

File Edit View Favorites Tools Help

Back Forward Stop Refresh Home Search Favorites History Mail Print Real.com

Address <http://209.235.22.106:8080/home/index.asp> Go Links

WEATHER enter city or zip

>> News <<

RSC announces 10 completed acquisitions [read more](#)

PRIME opens it's 5th Store in Mexico [read more](#)

[click here](#)

December 09, 2000

- Home
- Rental
- Used Equipment
- New Equipment
- Managed Services
- Industrial Services
- Strategic Accounts
- PRIME Energy
- Tools & Supplies
- Locations
- Careers
- Company Info.
- Contact Us

A STRATEGIC MERGER EQUIPPED TO SERVE YOU BETTER...

Mexico

- Monclova, Coah
- Zapopan, Jalisco
- Monterrey
- Tamaulipas, Altamira
- Tamaulipas, Reynosa
- Tlalhepantia

(click on a location nearest you!)

- PRIME Equipment
- RSC Location
- PRIME Energy

[mexico\(click here\)](#)

Copyright ©2000, Rental Service Corporation & PRIME Service, INC. - Usage & Agreement - Privacy Policy

Companies within the Atlas Copco Group

RSC & PRIME - Microsoft Internet Explorer

File Edit View Favorites Tools Help

Back Forward Stop Refresh Home Search Favorites History Mail Print Real.com

Address <http://209.235.22.106/home/map.asp> Go Links

WEATHER enter city or zip

December 13, 2000 [Locations Search](#) [List Of All Locations](#) [Clickable Store Map](#) [All Local Events](#)

Home

Rental

Used Equipment

New Equipment

Managed Services

Industrial Services

Strategic Accounts

PRIME Energy

Tools & Supplies

Locations

Careers

Company Info.

Contact Us

Canada [canada \(click here\)](#)

(Click on a location nearest you!)

(click on a location nearest you!)

[mexico \(click here\)](#)

Copyright ©2000, Rental Service Corporation & PRIME Service, INC. - Usage & Agreement - Privacy Policy Companies within the Atlas Copco Group

Internet

RSC & PRIME - Microsoft Internet Explorer

File Edit View Favorites Tools Help

Back Forward Stop Refresh Home Search Favorites History Mail Print Real.com

Address <http://209.235.22.106:8080/home/index.asp> Go Links

WEATHER enter city or zip

PRIME Equipment
Rentals/Tools/Service

December 08, 2000

- Home
- Rental
- Used Equipment
- New Equipment
- Managed Services
- Industrial Services
- Strategic Accounts
- PRIME Energy
- Tools & Supplies
- Locations
- Careers
- Company Info.
- Contact Us

Talk to us NOW!
GO

A STRATEGIC MERGER EQUIPPED TO SERVE YOU BETTER...

canada (click here) ←

(click on a location nearest you!)

- PRIME Equipment
- RSC Location
- PRIME Energy

mexico (click here) ←

>> News <<

RSC announces 10 completed acquisitions [read more](#)

PRIME opens it's 5th Store in Mexico [read more](#)

PRIME Energy

Systems

[click here](#)

Copyright ©2000, Rental Service Corporation & PRIME Service, INC. - Usage & Agreement - Privacy Policy Companies within the Atlas Copco Group



Internet

Contact Us - Microsoft Internet Explorer


File Edit View Favorites Tools Help

Back Forward Stop Refresh Home Search Favorites History Mail Print Real.com


Address <http://192.206.176.31/contactus/> Go Links >>

Click on an option below to connect.




Send us an email message.



Call Me "Call Me" and we will call you.

This option is available
Monday - Friday
7am - 7pm (Central Time)


Requires a second phone line or direct connection to the Internet.



"Chat" and we can text chat with you.

This option is available
Monday - Friday
7am - 7pm (Central Time)

Does not require a second phone line.



Meet Me "Meet Me" to connect with a specific Customer Service Rep.

This option is used if you are currently speaking with a customer service rep and you are invited to enhance your call with an Internet connection.

Requires a telephone and Internet connection.

You are always welcome to contact us by calling (Toll Free) **877-869-2778**.



<http://192.206.176.31/chat> Internet

Caller Form - Microsoft Internet Explorer

File Edit View Favorites Tools Help

Back Forward Stop Refresh Home Search Favorites History Mail Print Real.com

Address <http://192.206.176.31/callback/> Go Links >>



Fill in the boxes and select "Connect" to have a representative call you.

First name:

Last name:

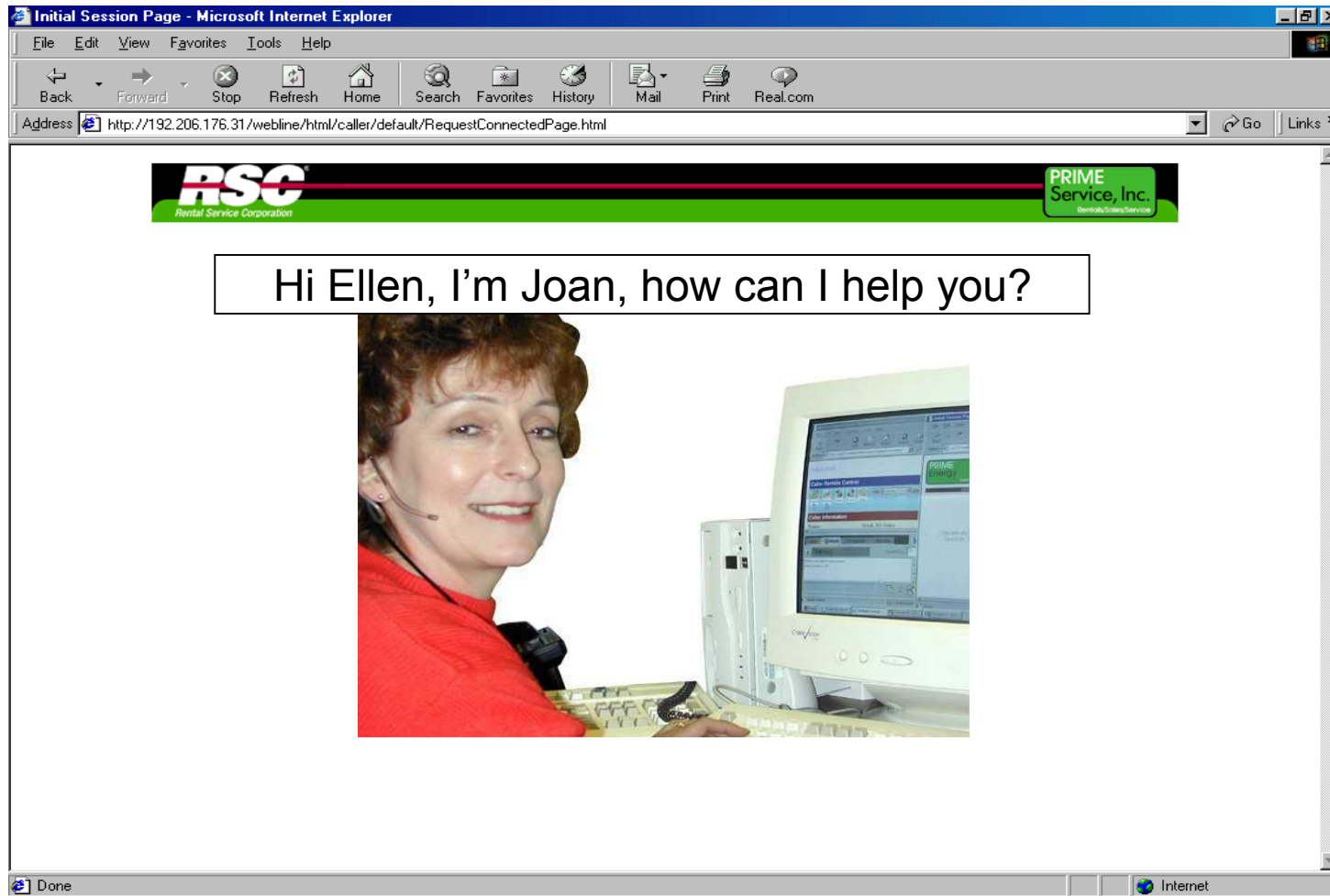
Company:

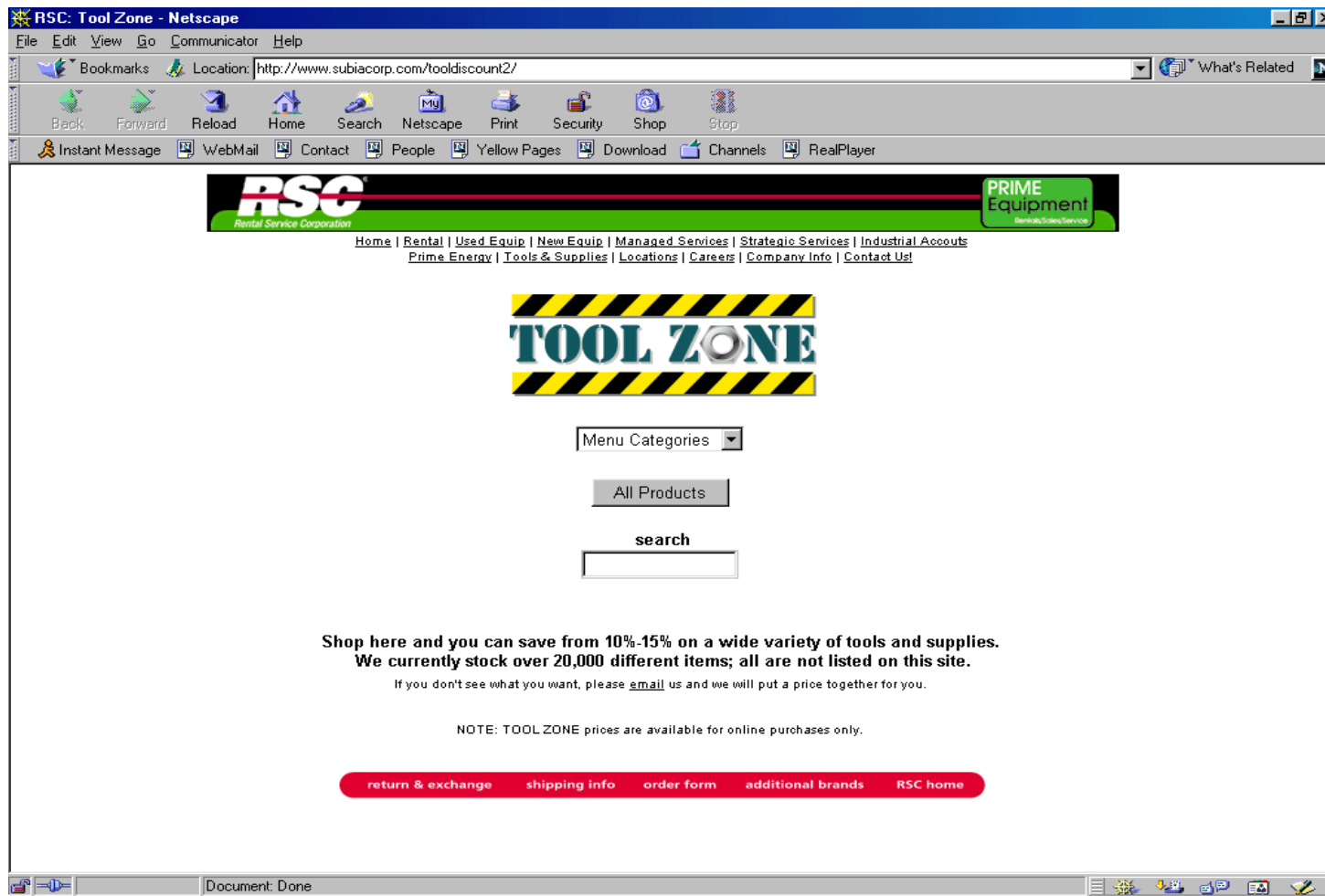
Phone Number:

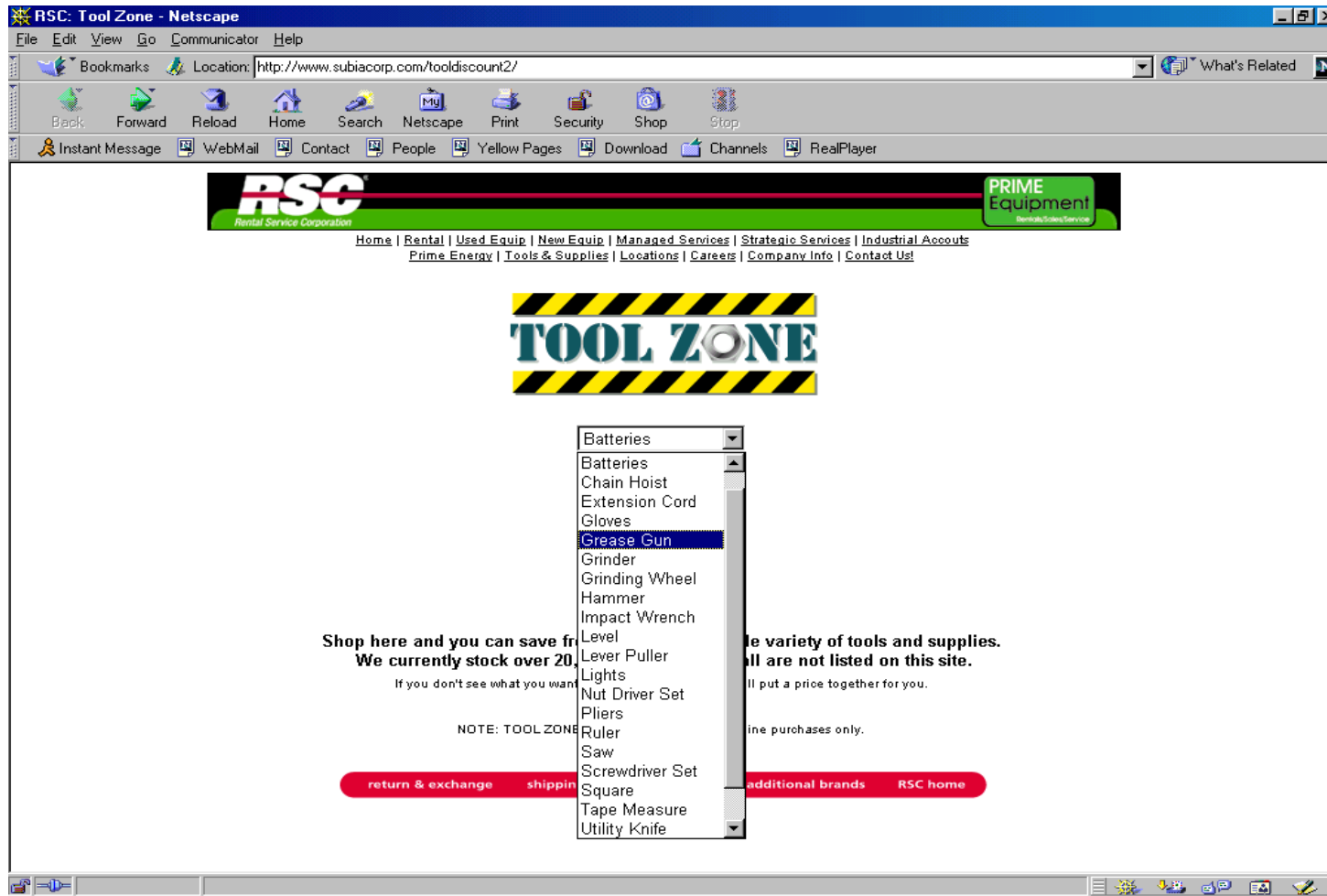
Choice:

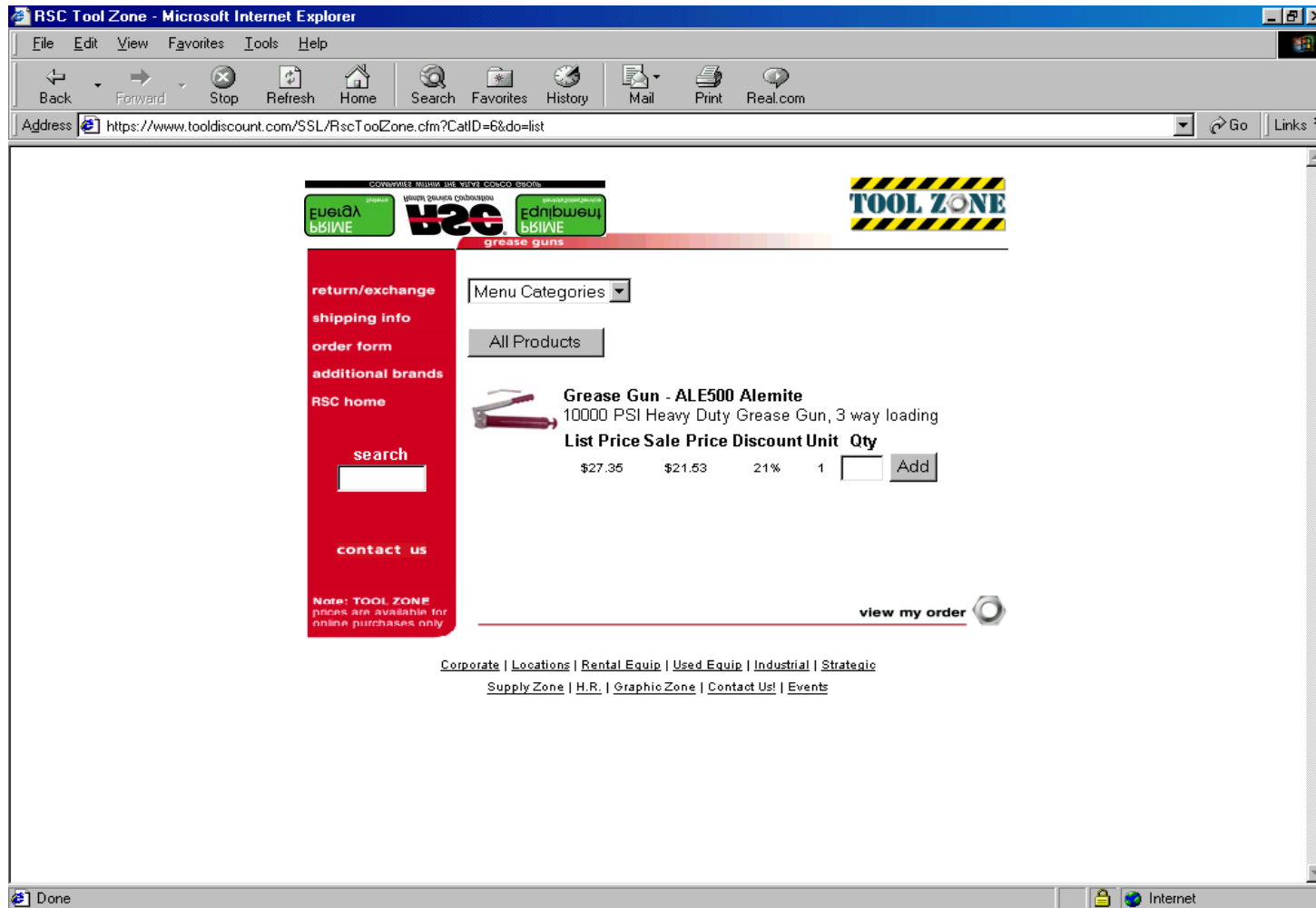
Note: If you have only one telephone line and will remain online with your computer, we can call your **cell phone number**, if you enter it, above.

Done Internet











interaction commitment, innovation

Welcome to the Atlas Copco Group on the Internet. This site provides information to shareholders, analysts and students, as well as press releases and contact information.

The Atlas Copco Group hosts a number of different brands. If you want to learn more about our brands you can access their websites from the drop down box below.

Choose a brand

latest news

15th November 2000 - Dan Perry New President for Atlas Copco's Milwaukee Electric Tool Division. [→](#)

7th November 2000 - Atlas Copco launches Internet technology in tightening systems for car assembly [→](#)

30th October 2000 - ATLAS COPCO'S FINANCIAL INFORMATION FOR 2001 [→](#)

Tom Bennett, Business Area Executive for Rental Service, has merged its two divisions RSC and Prime



**The New Desoutter
SD Screwdriver**

the stock:

ATLAS COPCO A-SHARE: SEK 231,00 -1,50 (19:01)
ATLAS COPCO B-SHARE: SEK 221,50 -2,00 (19:01)

Also in Progress...

- ▶ More Powerful -- Used Equipment Sales, online
- ▶ Online Rental
- ▶ eCRM, eProcurement, eLearning, eMeetings
- ▶ Spanish & Canadian French



Rental Service Corporation's World Class e-Business





Atlas Copco



Cautionary Statement

- ▶ “Some statements herein are forward-looking and the actual outcome could be materially different. In addition to the factors explicitly commented upon, the actual outcome could be materially effected by other factors like for example, the effect of economic conditions, exchange-rate and interest-rate movements, political risks, impact of competing products and their pricing, product development, commercialization and technological difficulties, supply disturbances, and the major customer credit losses.”