

First in Mind—First in Choice™



Capital Markets Day 2006

Gunnar Brock, President and CEO

Atlas Copco

Atlas Copco in a Snapshot

Continuing operations

- A world leading provider of industrial productivity solutions
- Three focused, profitable and strong industrial businesses
 - The products and services range from compressed air and gas equipment, generators, construction and mining equipment, industrial tools and assembly systems, to related aftermarket and rental
- LTM revenues of BSEK 49, operating margin of 18.2% and high return on capital employed
- More than 25 000 employees



December 4, 2020 www.atlascopco.com

Innovative Solutions



December 4, 2020 www.atlascopco.com

Businesses and Market Position



December 4, 2020 www.atlascopco.com

Compressors

Compressor Technique



- World leader in compressed air products and solutions
- Global coverage with own resources in sales and aftermarket support
- Technology and cost leadership



December 5, 2020 www.atlascopco.com

Construction and Mining Equipment

Construction and Mining Technique



- Leading market position, globally
- Good balance in product portfolio and geographical markets
- Strong foundation for growth



December 5, 2020 www.atlascopco.com

Industrial Tools

Industrial Technique



- Strong global leadership
- Application focus on both Motor Vehicle Industry and General Industry
- Leading technology development



December 5, 2020 www.atlascopco.com

Vision – To be a leader

- First in Mind—First in Choice™
 - Lead in the share of mind and share of choice of our customers
- Be seen as the innovator, setting the standards
- Exceed high expectations
- Be #1 or #2, in every product market/application and geographic segment where we compete

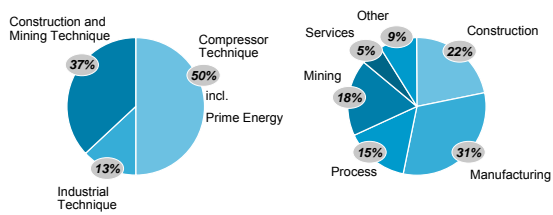


Atlas Copco

December 4, 2006 www.atlascopco.com

Atlas Copco

Continuing operations

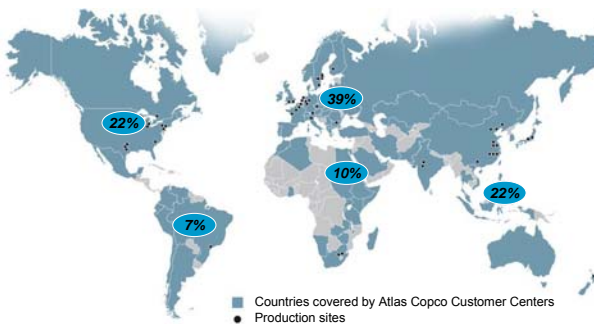


Atlas Copco

January – September 2006

December 4, 2006 www.atlascopco.com

Worldwide Presence



Atlas Copco

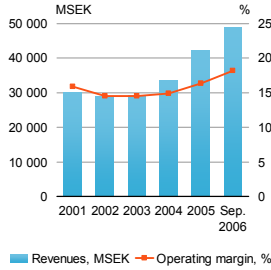
Portion of orders received, 12 months

December 4, 2006 www.atlascopco.com

Atlas Copco

Revenues and operating margin

Pro forma excluding divested businesses: professional electric tools and equipment rental



Atlas Copco

11 December 4, 2006 www.atlascopco.com

Q3 2006 - Highlights

- Value creation
 - High growth
 - Double digit growth in all regions
 - Good demand from most customer segments
 - Solid growth in the aftermarket business
 - Increased profits
 - All business areas improved profit margins
- Atlas Copco sells majority stake of the equipment rental business

Atlas Copco

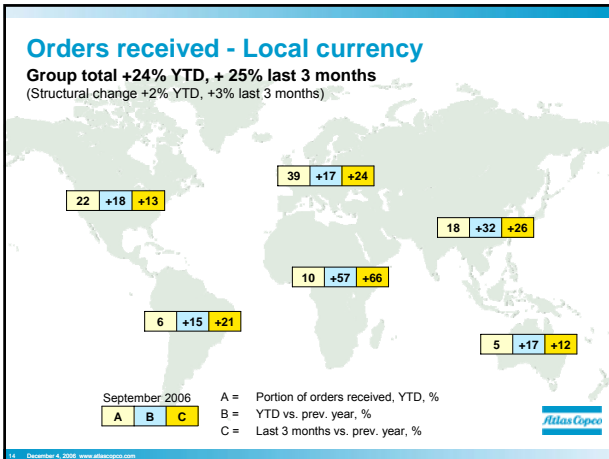
12 December 4, 2006 www.atlascopco.com

Q3 2006 - Figures in summary

- Orders received up 21%, +19% in volume
- Revenues up 17% to MSEK 12 538, up 15% in volume
- Operating profit up 29% to MSEK 2 306, a margin of 18.4% (16.6)
- Profit before tax at MSEK 2 081 (1 800), a margin of 16.6% (16.9)

Atlas Copco

13 December 4, 2006 www.atlascopco.com



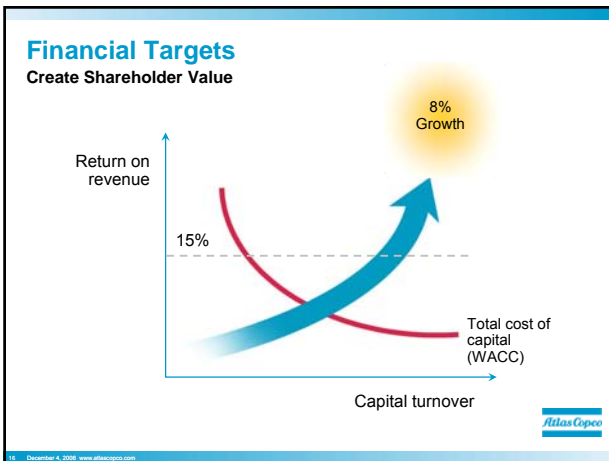
Atlas Copco Group

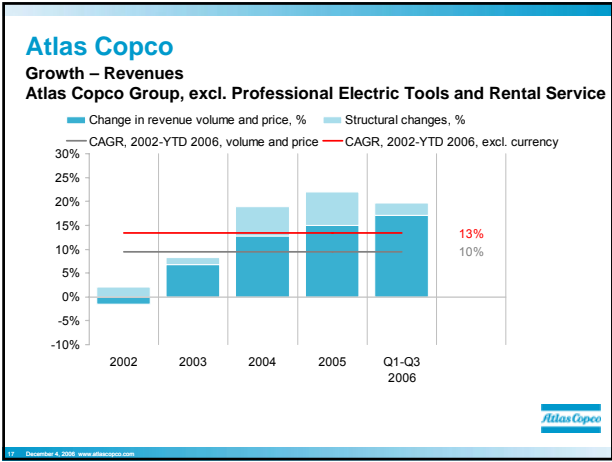
Operating Profit and Return On Capital Employed (ROCE) by Business Areas

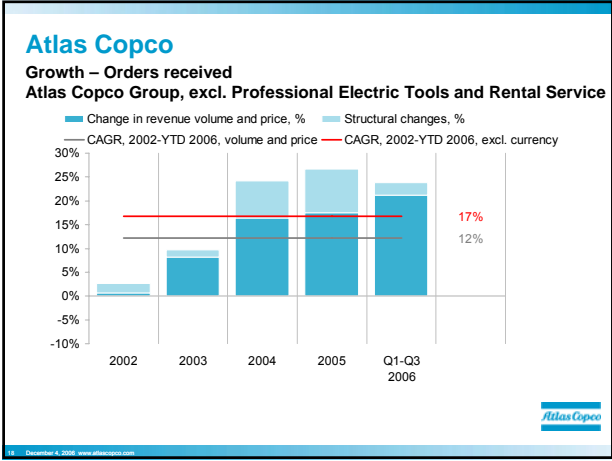
MSEK 12 month values, period ending	Revenues	Operating profit	Operating margin	ROCE
	Sep. 2006	Sep. 2006	Sep. 2006	Sep. 2006
Compressor Technique	23 879	4 931	20.6%	72%
Construction and Mining Technique	18 208	2 854	15.7%	34%
Industrial Technique	6 514	1 345	20.6%	64%
Rental Service	782	259	33.1%	na.
Eliminations/Common Group Functions	-471	-504		
Atlas Copco Group	48 912	8 885	18.2%	36%*

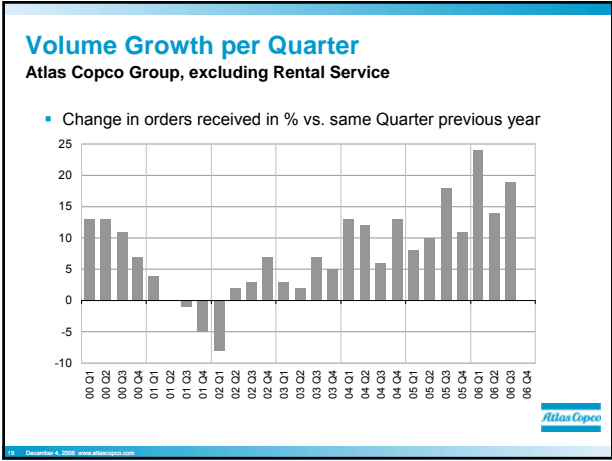
* including discontinued operations

December 4, 2006 www.atascopco.com









Why should Atlas Copco Succeed

– in growing 8% per year?

- Strong portfolio of businesses and products
- Commitment to product development
- Market position and brand value
- Dedication to aftermarket
- "Our house is in order" – stability and profitability. Processes in place.
- Acquisition potential
- Strong and competent leadership
- Continuous improvement



20 December 4, 2008 www.atlascopco.com



- Extend and develop the core and build new businesses and create options that are close to home.



21 December 4, 2008 www.atlascopco.com

Sales Potential – Extend and Defend Core



Segment
↓
Products



Presence
↓
Distribution

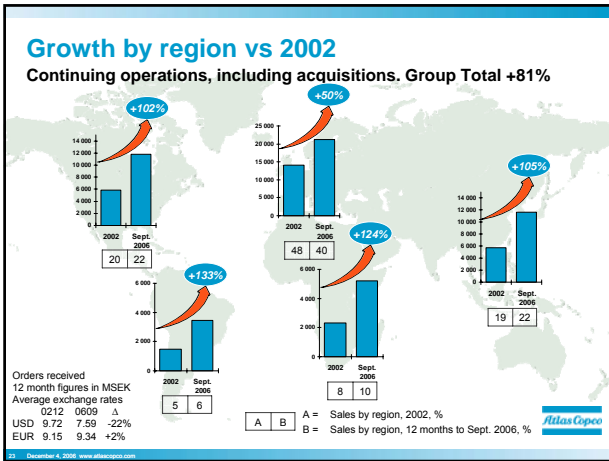


Penetration
↓
Customer share

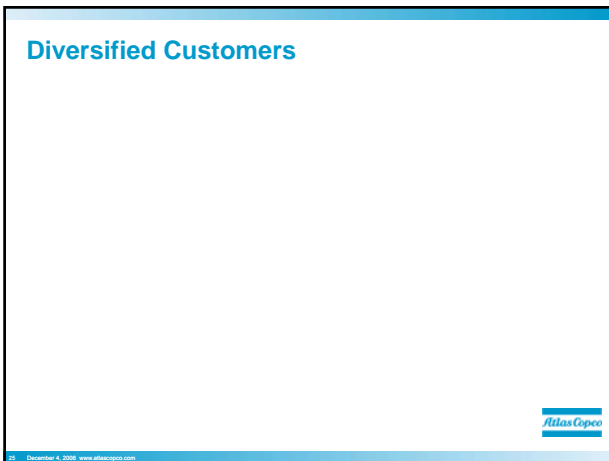
Sales potential	0.75 x	0.5 x	0.4	= 0.15
Max	1 x	1 x	1	= 1

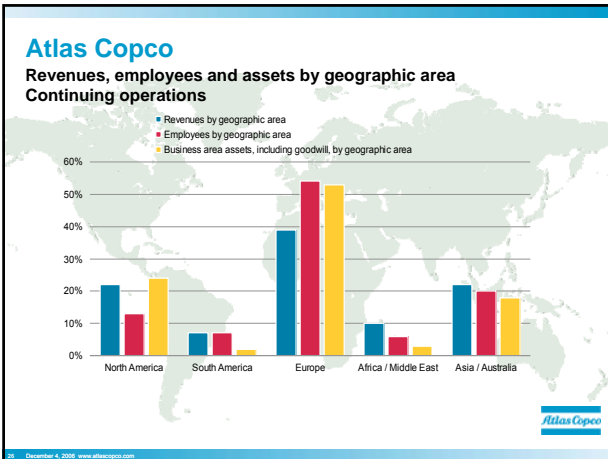


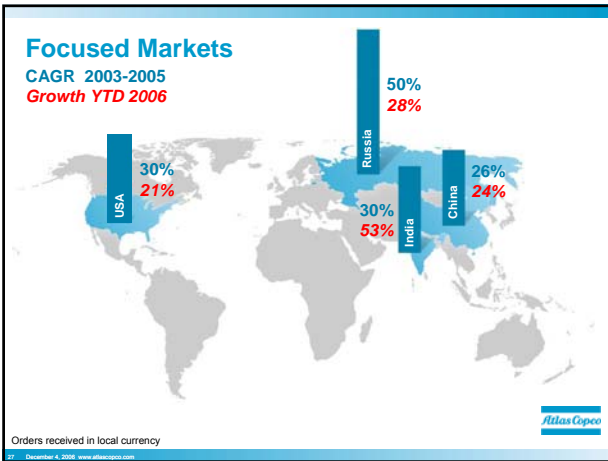
22 December 4, 2008 www.atlascopco.com











Aftermarket

Accessories, consumables, spare parts, service and maintenance and training

- High growth potential
- High profit potential
- Stable revenue stream
- Optimized business processes
- Enhanced product development
- Closer relationships with end-users
- Satisfied customers

December 4, 2006 www.atlascopco.com

Acquisition Strategy

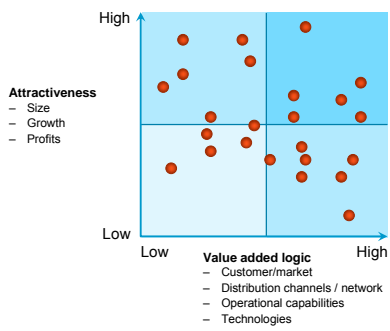


Atlas Copco

27 December 4, 2008 www.atlascopco.com

Acquisition Strategy

Screening of Alternatives



Atlas Copco

28 December 4, 2008 www.atlascopco.com

Economic Distance from the Core

– is measured on five dimensions

	Shared customers	Shared costs	Shared channels	Shared competitors	Shared capabilities/ technology
Core	●	●	●	●	●
1 step away from home	◐	◐	◐	◐	◐
2 steps away from home	◑	◑	◑	◑	◑
3 steps away from home	○	◑	●	○	◑
Diversification	○	○	○	○	◑

Source: Bain & Company

- Full Share
- ◐ Partial Share
- No Share

Atlas Copco

31 December 4, 2008 www.atlascopco.com

Growth

Acquisitions

- >30 acquisitions completed 2001-2005
 - Annual sales, at the time of the acquisition, > BSEK 5
- 9 acquisitions in 2006
 - Annual sales approximately BSEK 3

Includes all announced acquisitions (some pending final approval) and small acquisitions not announced. Some of the acquisitions are distributors where some of the annual sales has been Atlas Copco products.

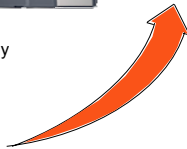


27 December 4, 2006 www.atlascopco.com

Compressor Technique

Growth Strategy

- Capitalize on strong market presence
 - Develop new businesses
 - Aftermarket
- Focused markets
- Focused segments
- Multi-branding
- Global logistics and manufacturing strategy
- Innovative product development
- Acquisitions

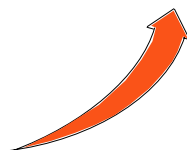


31 December 4, 2006 www.atlascopco.com

Construction and Mining Technique

Growth Strategy

- Reinforce leading market position
- New product development
- Service and aftermarket
- Key customer strategy
- Acquisitions

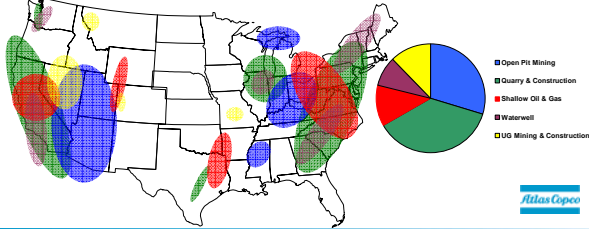


34 December 4, 2006 www.atlascopco.com

Construction and Mining Technique

Position in the Unites States

- 4 regions
- Strong distribution network
- Revenues 2005 > 5x revenues 2003
 - Ingersoll-Rand Drilling Solutions and Baker Hughes Mining Tools acquired 2002



December 4, 2008 www.atlascopco.com

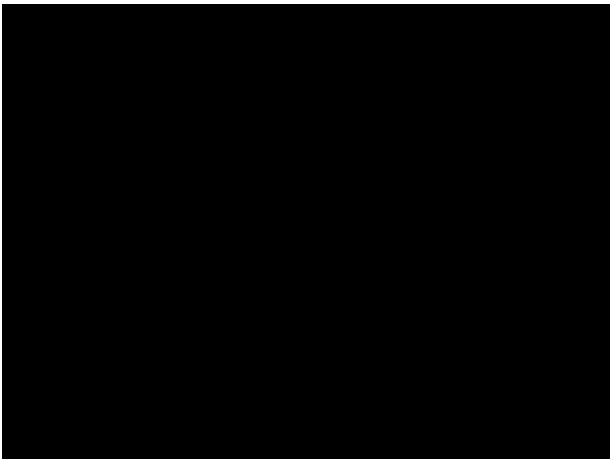
Construction and Mining Technique

Product Development

- Intelligent product concept to enhance productivity
- Scooptram ST 14



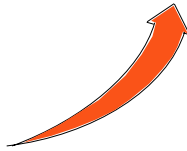
December 4, 2008 www.atlascopco.com



Industrial Technique

Growth Strategy

- Invest in sales force
- Increase sales of electric power tools in general industry
- Productivity and quality partner
- New product development
- Service and aftermarket
- Acquisitions



Atlas Copco

27 December 4, 2008 www.atlascopco.com

Industrial Technique

Product Development and Strategic Acquisition

- Products for small screw applications
- Atlas Copco electric screwdriver
- Microtec Systems



Atlas Copco

28 December 4, 2008 www.atlascopco.com

Industrial Technique

Service

- Operation and maintenance optimization
 - Balancing the cost of maintenance with the reduction of possible failures
- Application analysis
- Optimize tool selection
- Growth >20% YTD
- Strategic acquisitions of BLM and Technisches Büro Böhm GmbH

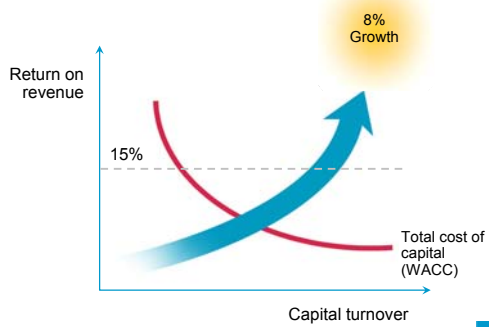


Atlas Copco

29 December 4, 2008 www.atlascopco.com

Financial Targets

Create Shareholder Value



Atlas Copco

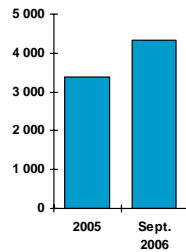
11 December 4, 2006 www.atlascopco.com

Value Creation

Economic Value Added – Continuing Operations

- Invested Capital BSEK 24
- ROI after tax 27%
- WACC 7.8%

- ROCE 43%
- WACC, pre-tax, 11.5%



Atlas Copco

12 month figures in MSEK

12 December 4, 2006 www.atlascopco.com

Atlas Copco Today

Summary

- Three focused, profitable and strong industrial businesses
- Well balanced strong global positions
- #1 or #2 in all important market segments
- High operating margin
- Efficient and effective utilization of capital – High return on capital employed
- Solid platform for growth
- Atlas Copco is well positioned to deliver on its financial targets


Atlas Copco

13 December 4, 2006 www.atlascopco.com



Cautionary Statement

"Some statements herein are forward-looking and the actual outcome could be materially different. In addition to the factors explicitly commented upon, the actual outcome could be materially effected by other factors like for example, the effect of economic conditions, exchange-rate and interest-rate movements, political risks, impact of competing products and their pricing, product development, commercialization and technological difficulties, supply disturbances, and the major customer credit losses."



01 December 4, 2008 www.atlascopco.com
