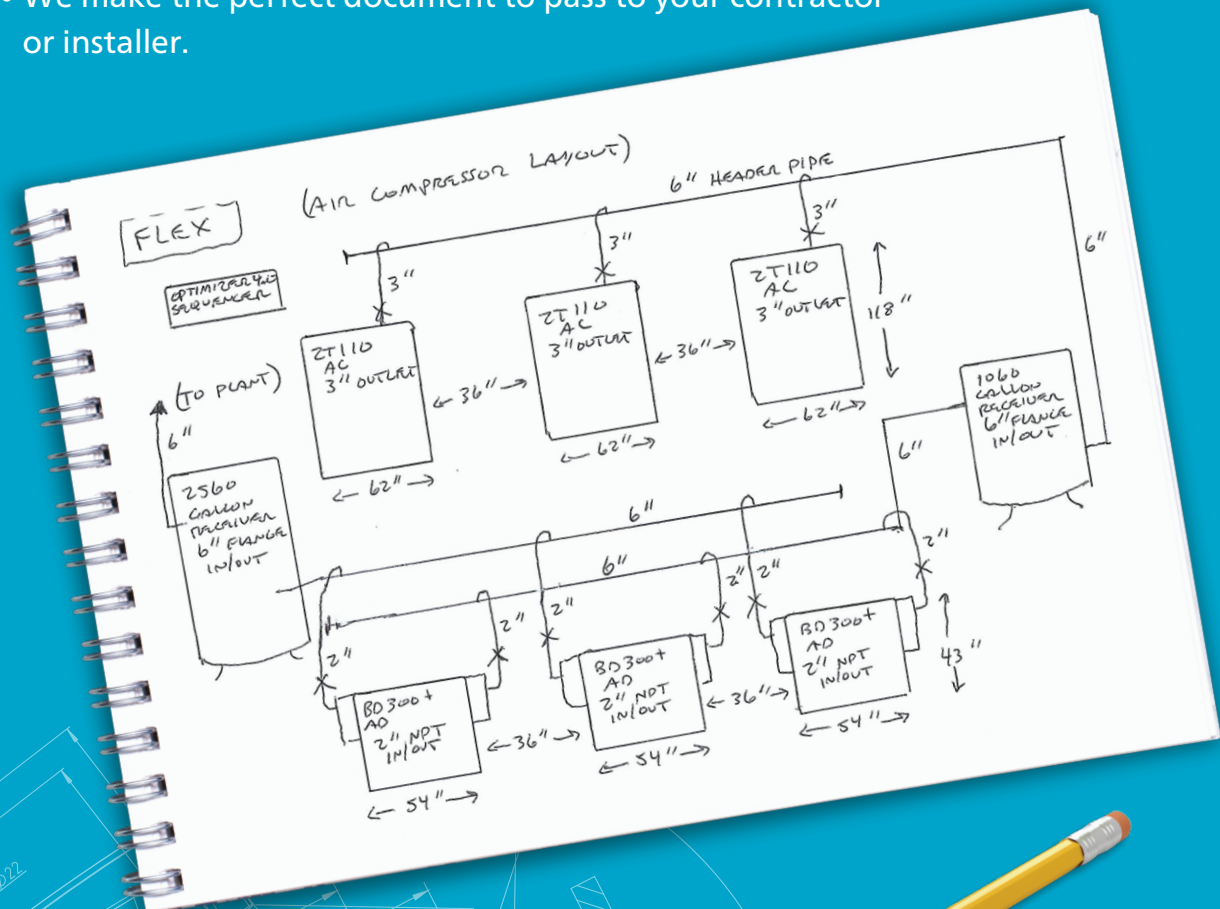


AIRnet Design Services— Bringing your sketch to life!

- We calculate and size the pipe, or verify the piping meets flow requirements.
- We make the layout in CAD with actual fittings and lengths of pipe to meet the desired dimensions of the facility.
- In person, we use the live CAD file to rotate views, spin, and zoom for specific details in real time.
- We make the perfect document to pass to your contractor or installer.

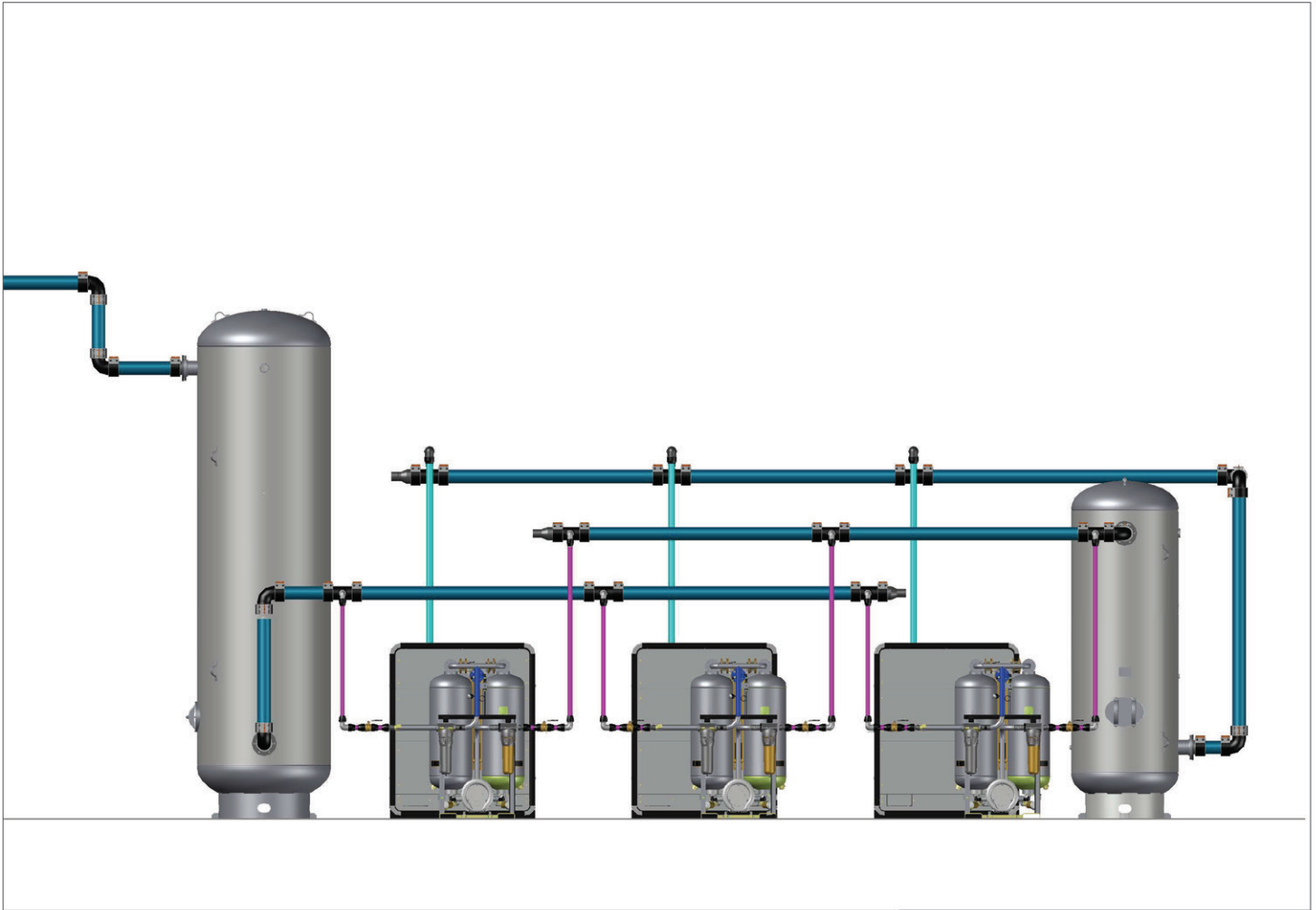


The following pages show examples of what you can expect to receive when using our services.

Elevation View–Front

Compressor Room AIRnet

Atlas Copco

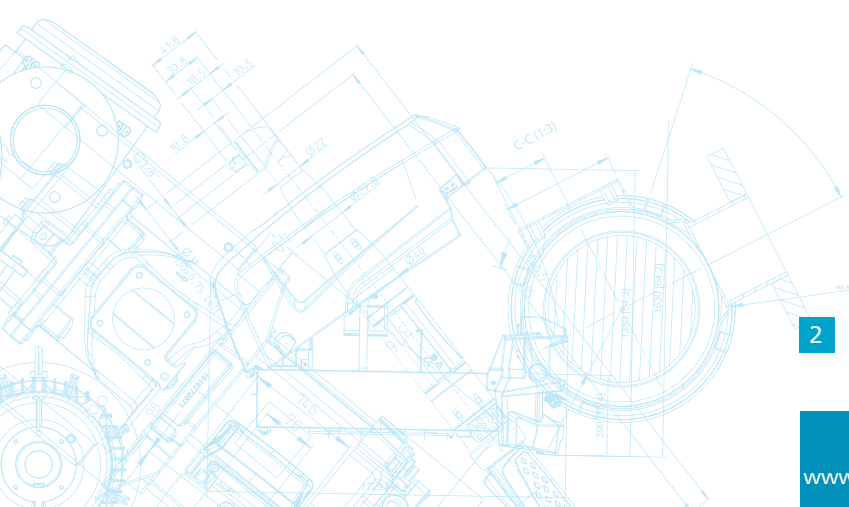


- BLUE** - 156 mm (6" OD) MAIN RISER / HEADER LOOP
- CYAN** - 80 mm (3" OD) COMPRESSOR FEEDS TO MAIN TRUNK / WET TANK
- MAGENTA** - 50 mm (2" OD) DRYER FEEDS TO DRY TANK / DROP LEGS TO DOUBLE VALVES

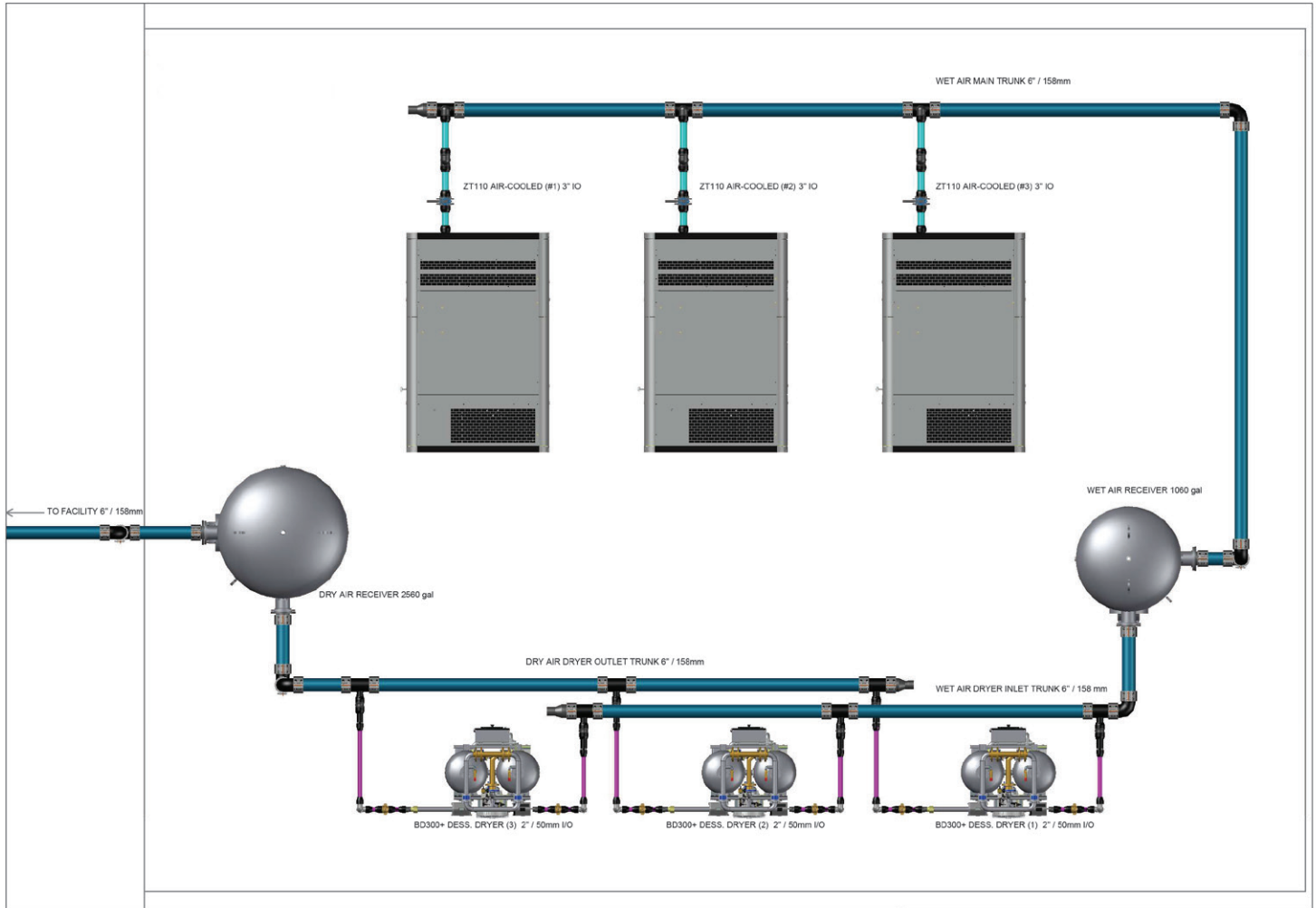
AIRNET

Atlas Copco (Thailand) Limited
 125 Moo 9 Wellgrow Industrial Estate, Bangna-Trad Rd. 36 Km,
 Bangwa, Bangkok, Chachoengsao, 24130
 +66 (0) 38 562 900, www.atlascopco.com, Line: @atlascopcothailand

PROJECT	COMPRESSOR ROOM AIRnet - EXAMPLE
DATE	2019-03

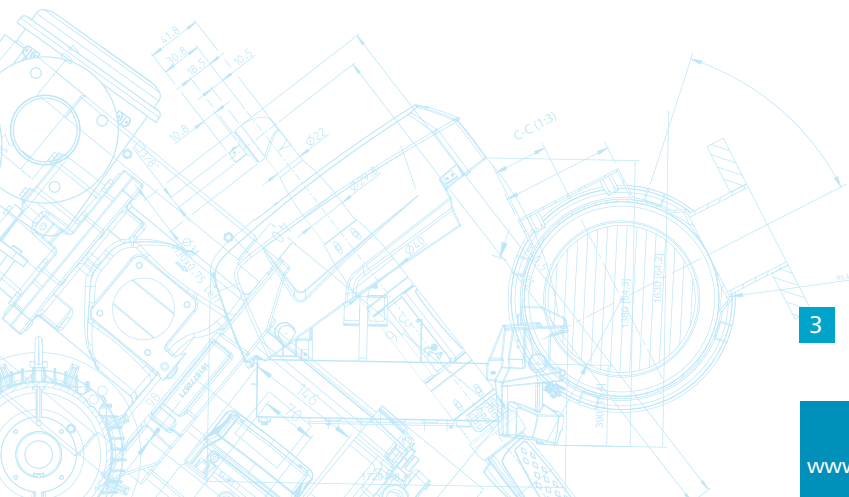


Top View Compressor Room



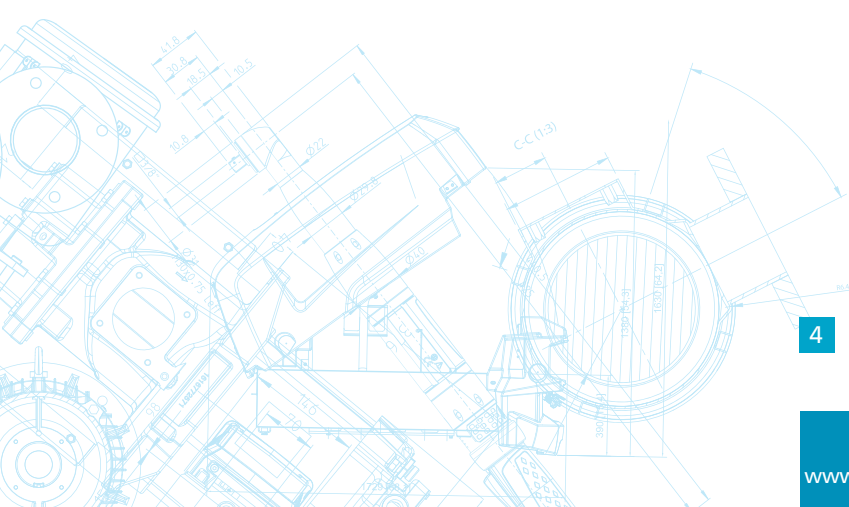
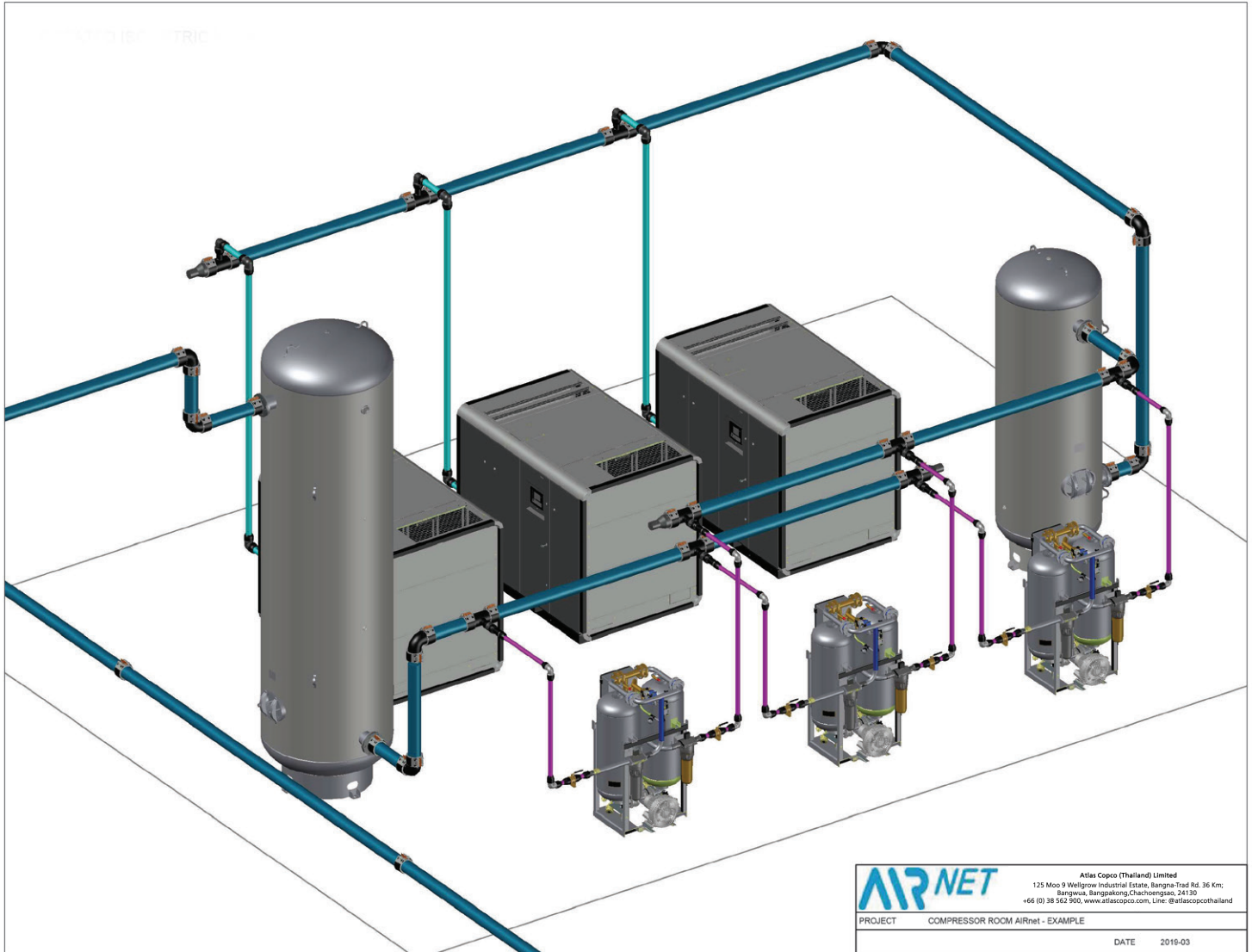
- BLUE** - 156 mm (6" OD) MAIN RISER / HEADER LOOP
- CYAN** - 80 mm (3" OD) COMPRESSOR FEEDS TO MAIN TRUNK / WET TANK
- MAGENTA** - 50 mm (2" OD) DRYER FEEDS TO DRY TANK / DROP LEGS TO DOUBLE VALVES

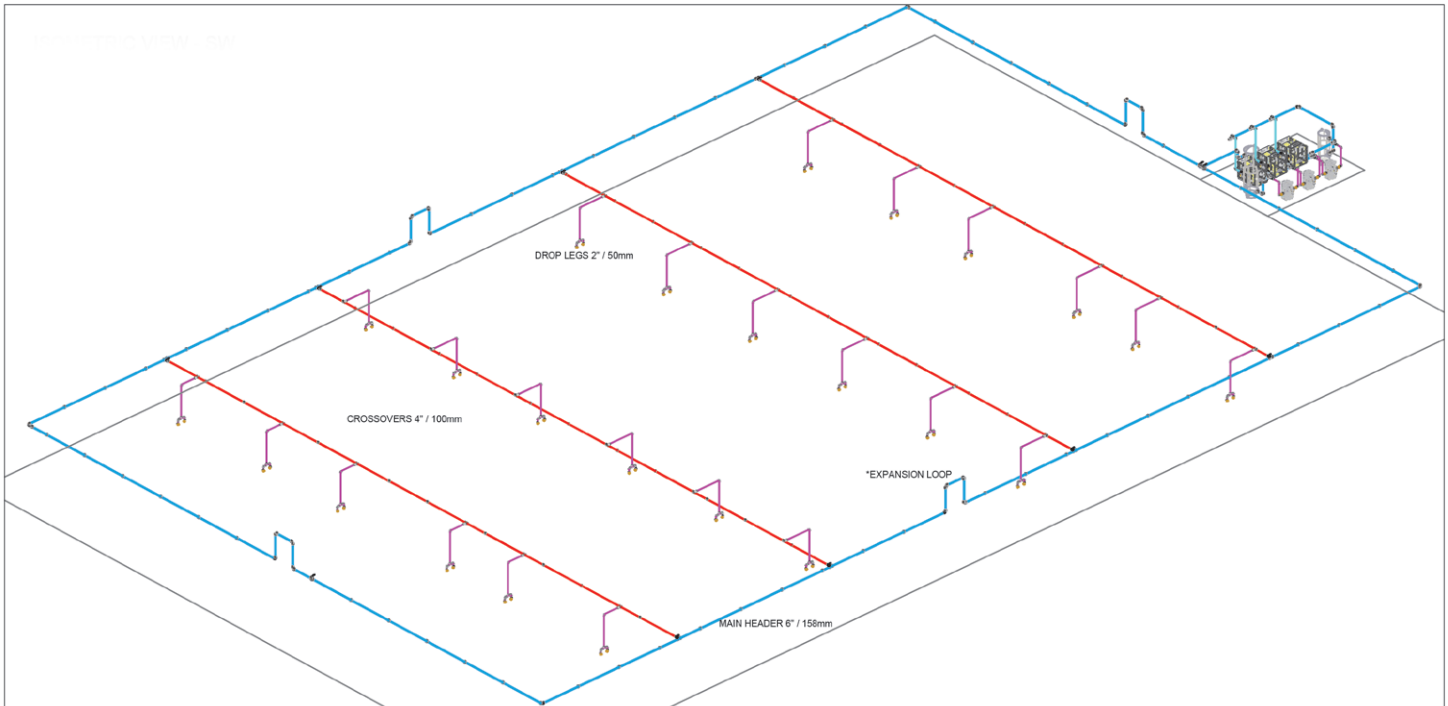
		Atlas Copco (Thailand) Limited 125 Moo 9 Wellgrow Industrial Estate, Bangna-Trad Rd. 36 Km; Bangwa, Bangkok, Chachoengsao, 24130 +66 (0) 38 562 900, www.atlascopco.com, Line: @atlascopcothailand	
		PROJECT	COMPRESSOR ROOM AIRnet - EXAMPLE
		DATE	2019-03



Rotated Isometric View Compressor Room

Atlas Copco



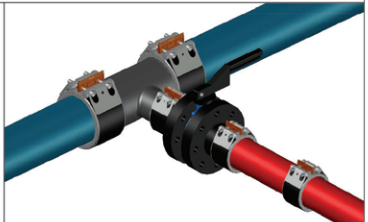
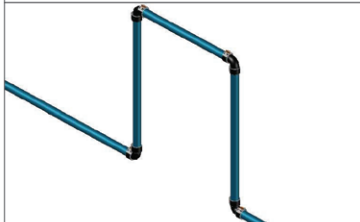


DETAIL VIEW - EXPANSION LOOP (x4, TYP)

DETAIL VIEW - REDUCTION TEE to 50 mm AIRnet / DROP LEGS (TYP)

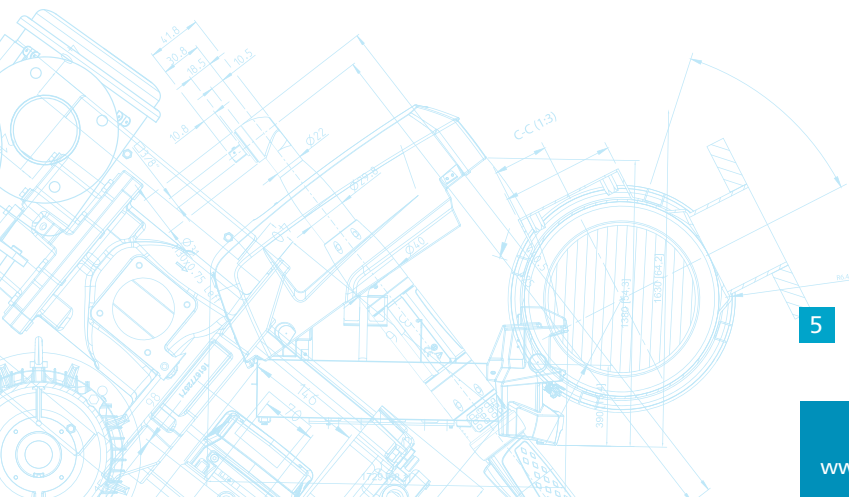
DETAIL VIEW - 50 mm DROP TERMINATIONS / 2 F-NPT VALVES

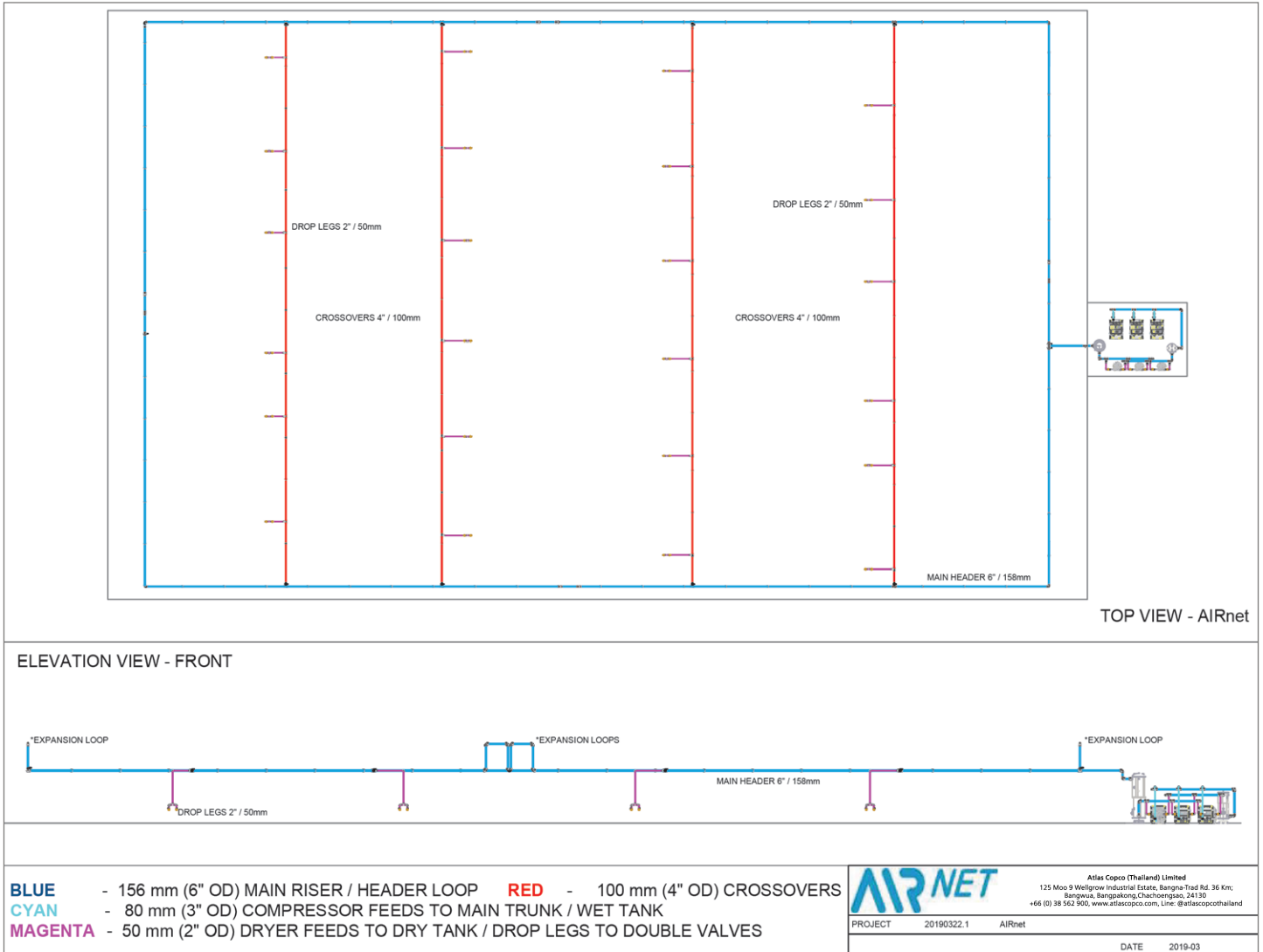
DETAIL VIEW - ISOLATION VALVES / BRANCH RED. TEES



- BLUE** - 156 mm (6" OD) MAIN RISER / HEADER LOOP
- CYAN** - 80 mm (3" OD) COMPRESSOR FEEDS TO MAIN TRUNK / WET TANK
- MAGENTA** - 50 mm (2" OD) DRYER FEEDS TO DRY TANK / DROP LEGS TO DOUBLE VALVES

AIRNET		Atlas Copco (Thailand) Limited 125 Moo 9 Wellgrow Industrial Estate, Bangna-Trad Rd. 36 Km; Bangwa, Bangkok, Chachoengsao, 24130 +66 (0) 38 562 900, www.atlascopco.com, Line: @atlascopcothailand	
PROJECT	20190322.1	AIRnet	DATE
			2019-03





Let our team support you on your next compressed air piping project.

