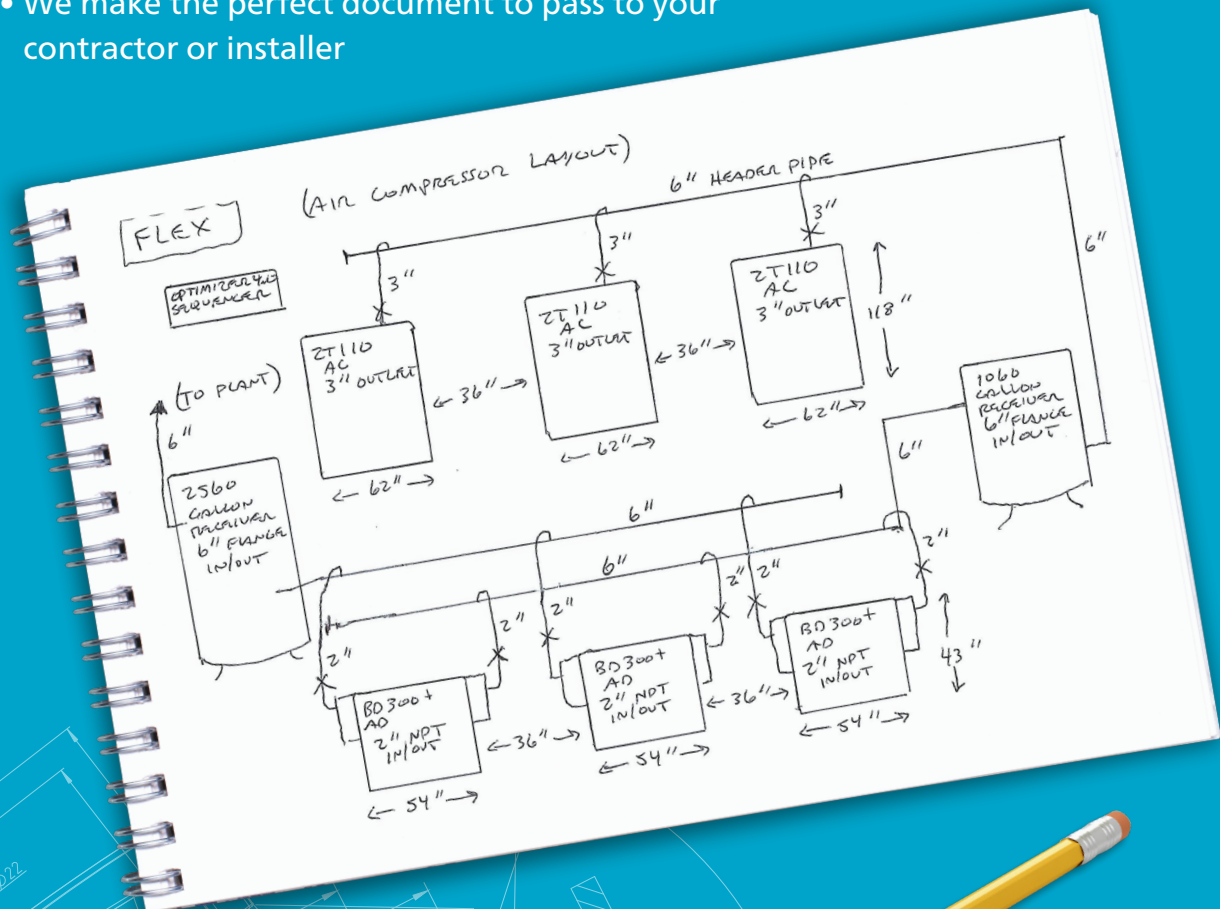


AIRnet Design Services— Bringing your sketch to life!

- We calculate and size the pipe, or verify the piping meets flow requirements.
- We make the layout in CAD with actual fittings and lengths of pipe to meet the desired dimensions of the facility.
- In person, we use the live CAD file to rotate views, spin, and zoom for specific details in real time.
- We make the perfect document to pass to your contractor or installer

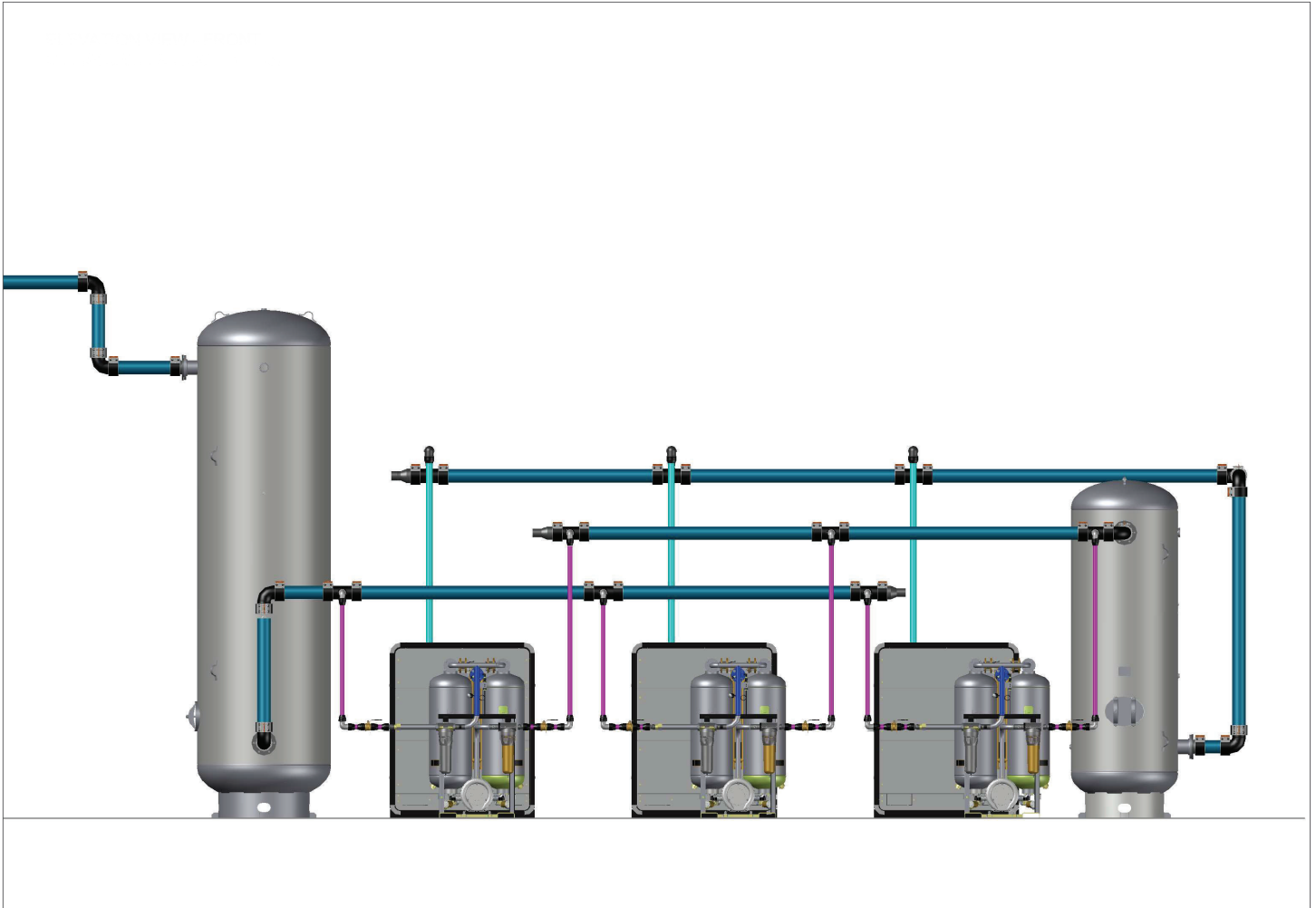


The following pages show examples of what you can expect to receive when using our services.

Elevation View–Front

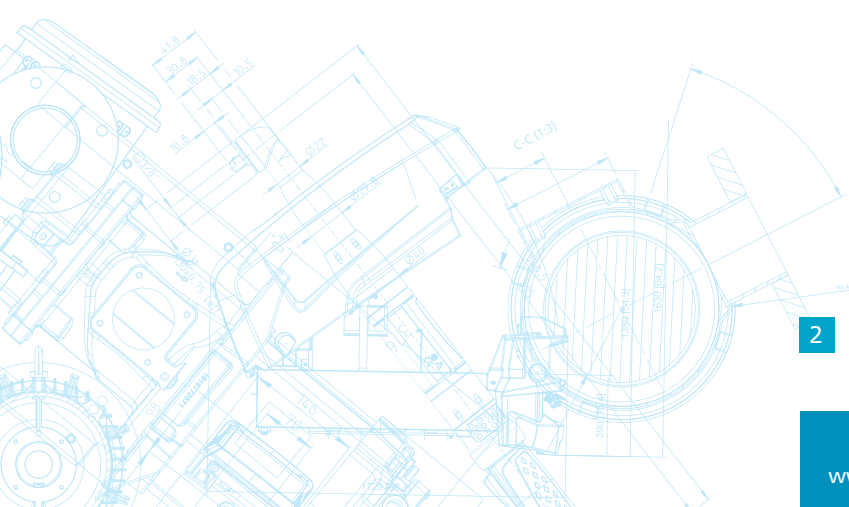
Compressor Room AIRnet

Atlas Copco

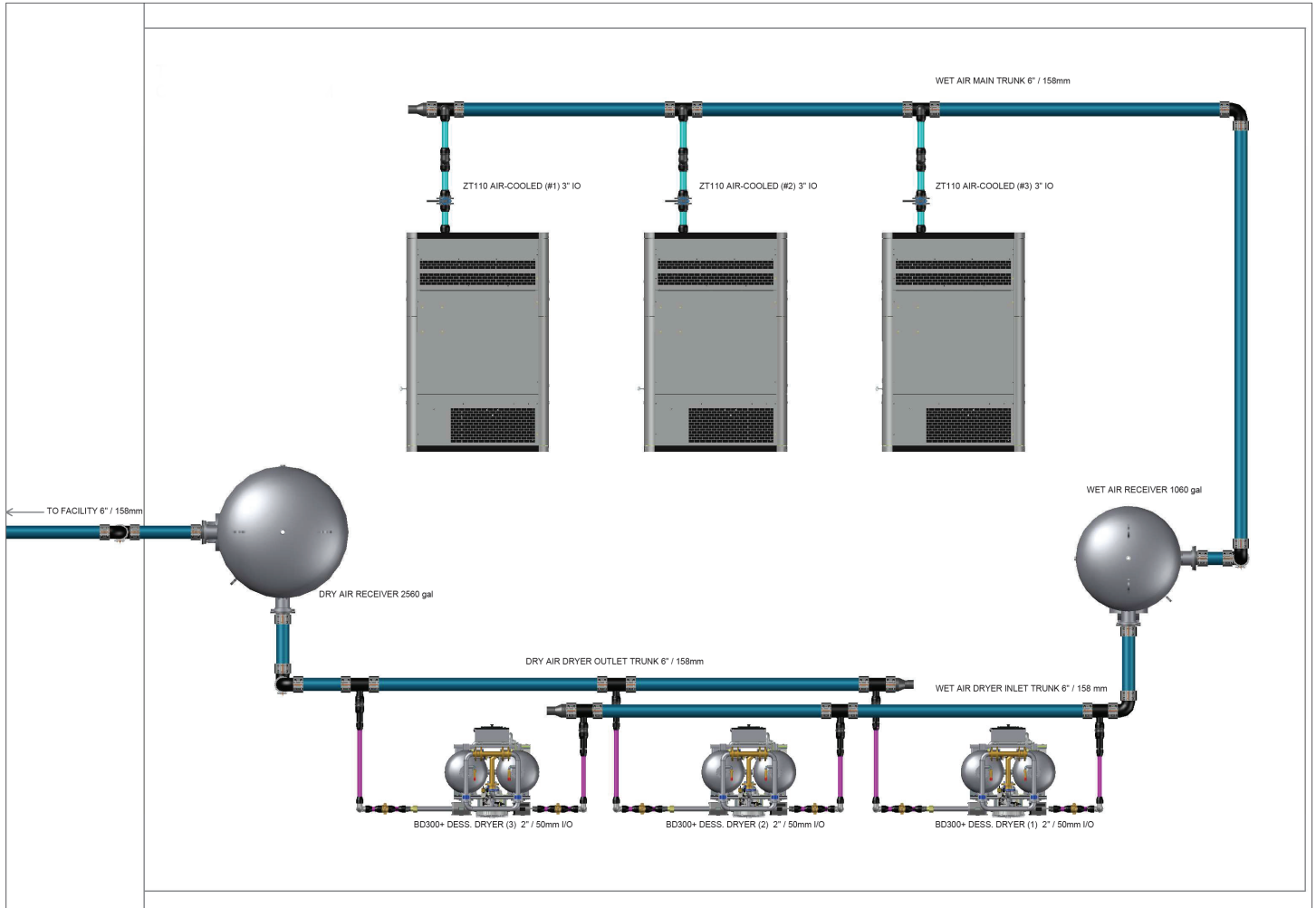


- BLUE** - 156 mm (6" OD) MAIN RISER / HEADER LOOP
- CYAN** - 80 mm (3" OD) COMPRESSOR FEEDS TO MAIN TRUNK / WET TANK
- MAGENTA** - 50 mm (2" OD) DRYER FEEDS TO DRY TANK / DROP LEGS TO DOUBLE VALVES

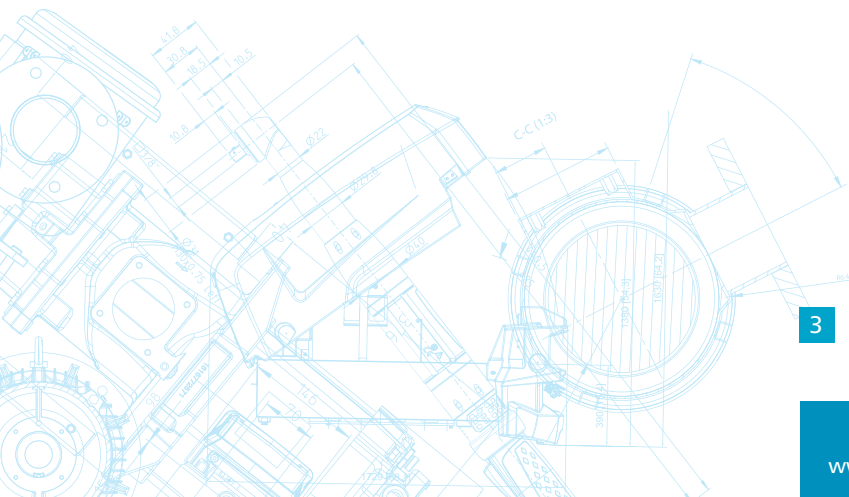
AIRNET



Top View Compressor Room



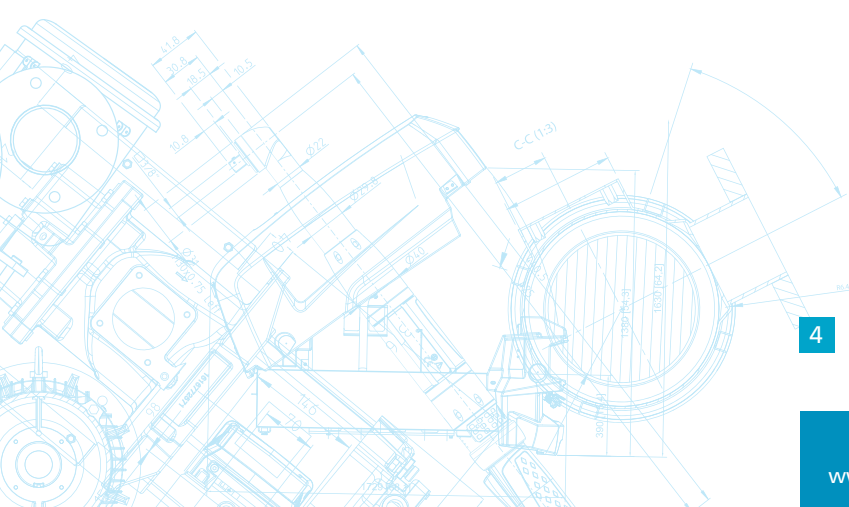
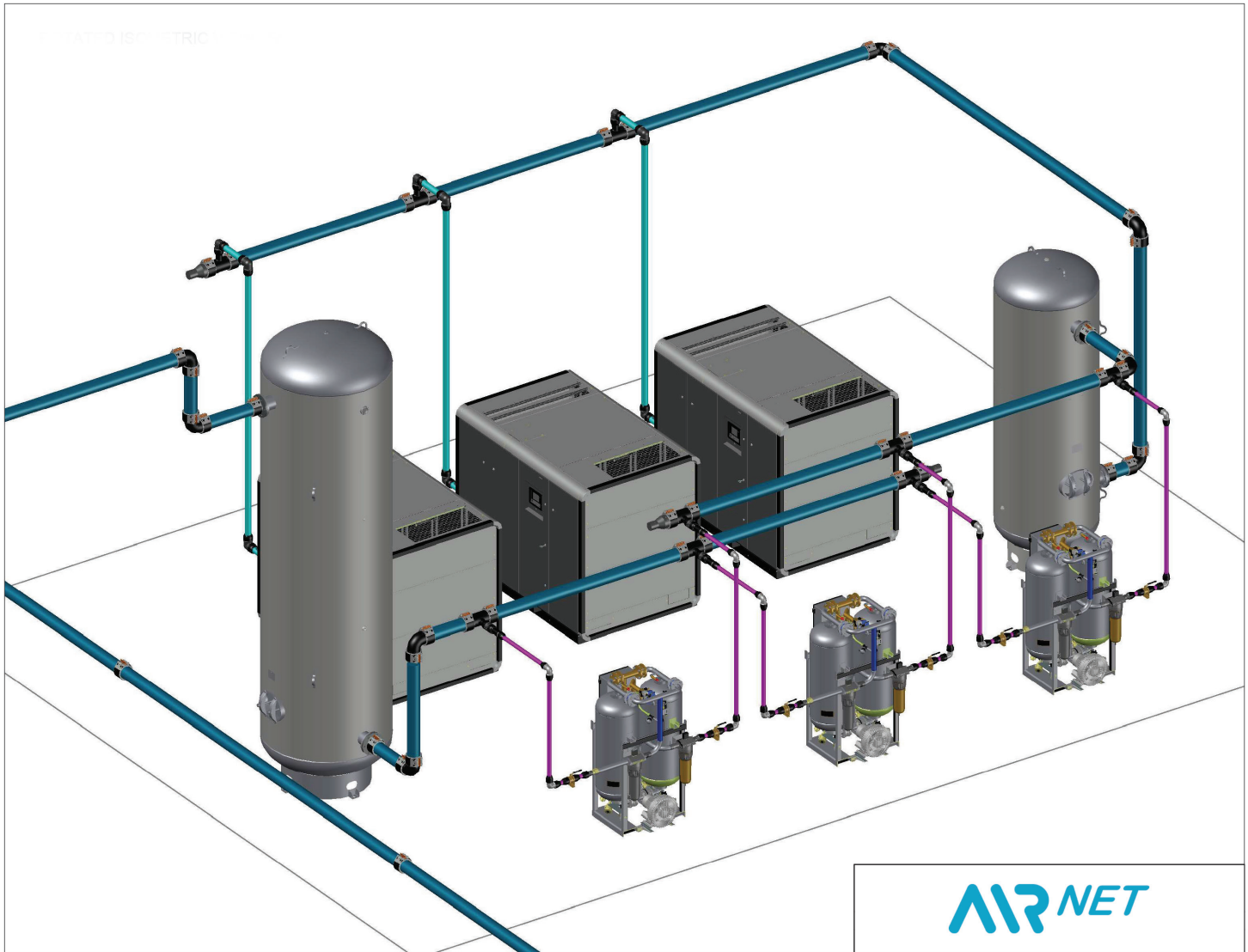
- BLUE** - 156 mm (6" OD) MAIN RISER / HEADER LOOP
- CYAN** - 80 mm (3" OD) COMPRESSOR FEEDS TO MAIN TRUNK / WET TANK
- MAGENTA** - 50 mm (2" OD) DRYER FEEDS TO DRY TANK / DROP LEGS TO DOUBLE VALVES

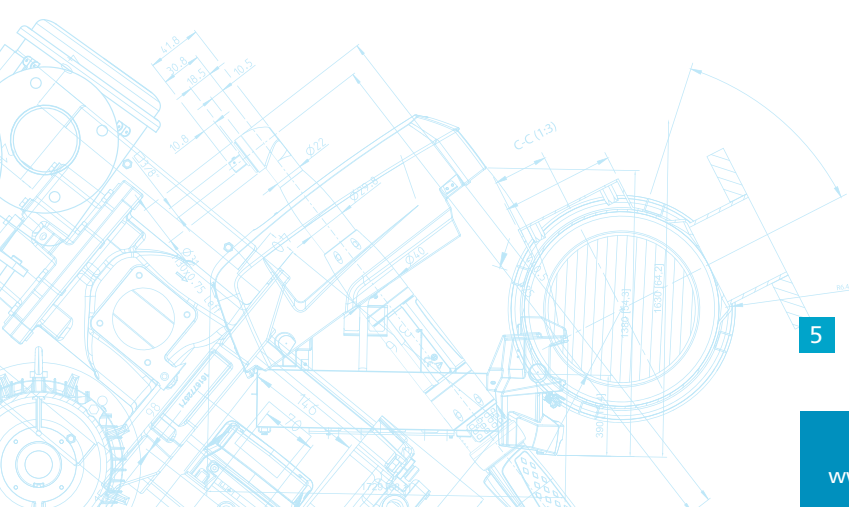
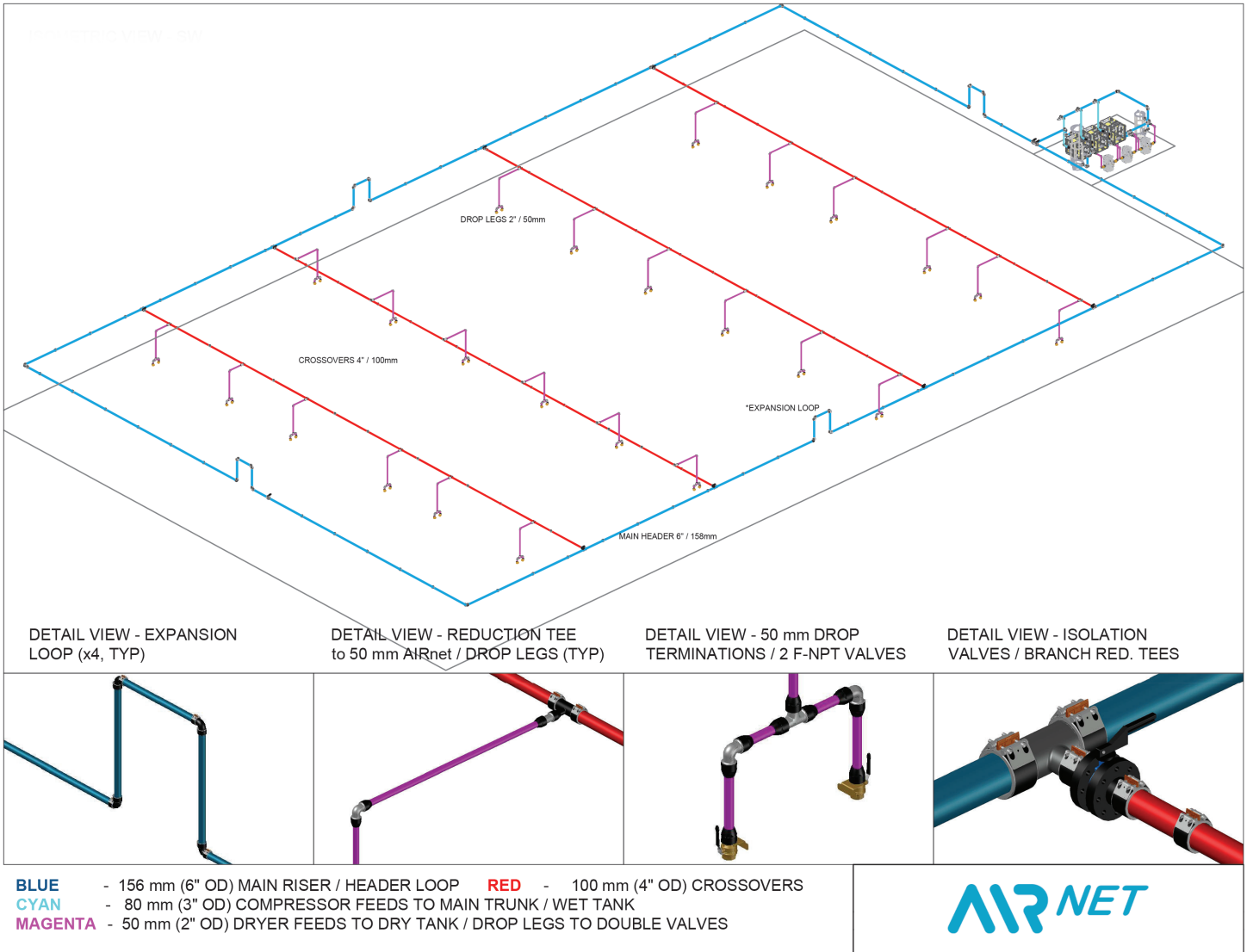


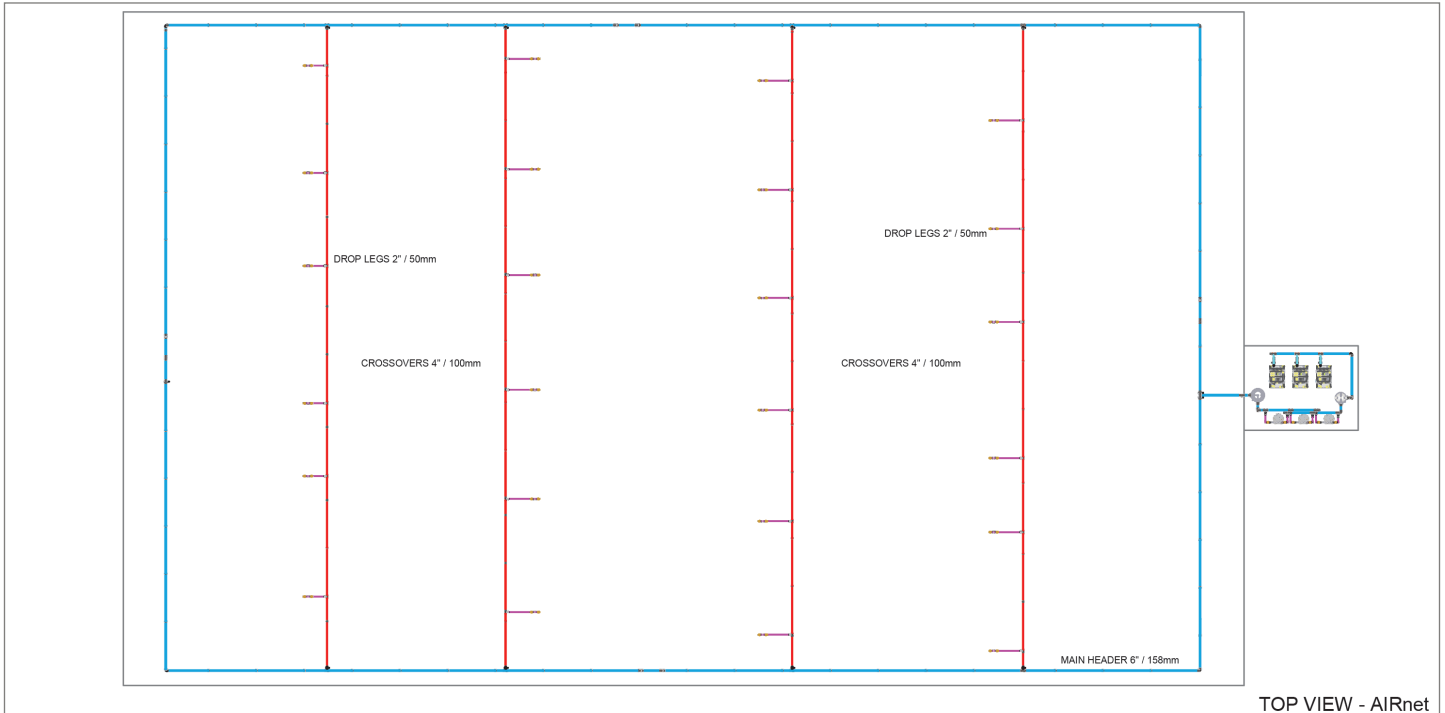
Rotated Isometric View

Compressor Room

Atlas Copco

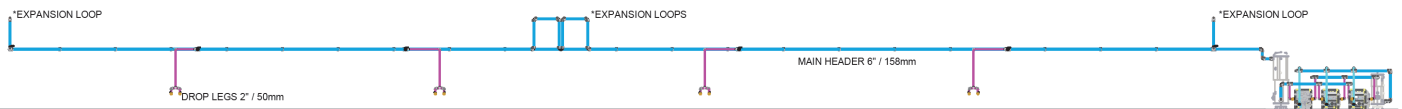






TOP VIEW - AIRnet

ELEVATION VIEW - FRONT



- | | |
|--|---|
| <p>BLUE - 156 mm (6" OD) MAIN RISER / HEADER LOOP</p> <p>CYAN - 80 mm (3" OD) COMPRESSOR FEEDS TO MAIN TRUNK / WET TANK</p> <p>MAGENTA - 50 mm (2" OD) DRYER FEEDS TO DRY TANK / DROP LEGS TO DOUBLE VALVES</p> | <p>RED - 100 mm (4" OD) CROSSOVERS</p> |
|--|---|



Let our team support you on your next compressed air piping project.

