

# *PST Fixtured Solutions Assembly Workstations*

Product Value Information

*Atlas Copco*

*Atlas Copco*



# PST Fixtured Solutions

*PST Fixtured solutions have been designed to fulfill the needs of pressing and pulling applications by utilizing PST tools.*

*Multiple press frame types are available to provide a suitable option for a variety applications. Each frame is optimized to allow minimal deflection while providing an ergonomic working envelope.*

*All standard frame designs are rated to allow a maximum deflection of 0.5 mm. For deflection-critical applications additional stiffening options can be employed.*

## PRESS FRAMES - 2-COLUMN FRAME

### FEATURES

- ▶ Large working surface
- ▶ Concentric deflection
- ▶ T-slots for flexible part fixturing

### CUSTOMER VALUES

- ▶ Flexible: able to accept multiple parts
- ▶ Stable: low deflection insuring accuracy
- ▶ Scalable: able to integrate into existing work stations or be Stand Alone



## PRESS FRAMES - COMPACT C-FRAME

### FEATURES

- ▶ Small footprint
- ▶ High part accessibility
- ▶ Part fixturing via tapped holes (M8)
- ▶ Frame mounting provisions located on bottom surface of frame



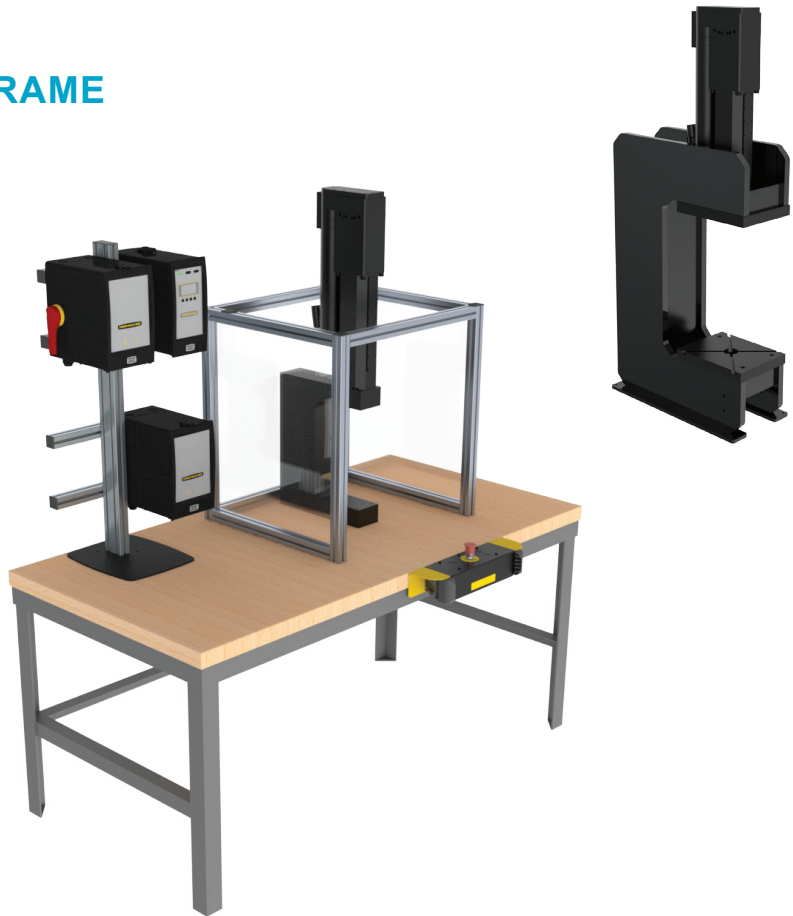
## PRESS FRAMES - LARGE C-FRAME

### FEATURES

- ▶ Increased working envelope
- ▶ High part accessibility
- ▶ T-slots for flexible part fixturing

### CUSTOMER VALUES

- ▶ Flexible: able to accept multiple parts
- ▶ Compact: small footprint saving space
- ▶ Scalable: able to integrate into existing work stations or be Stand Alone



## PRESS FRAMES - HANDHELD

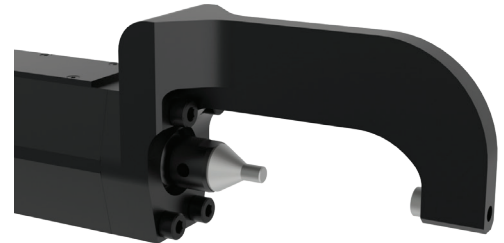
Lightweight, compact design

### CUSTOMER VALUES

- ▶ Flexible: hand-held solution
- ▶ Compact: small easy to handle

### NOTES

- ▶ Tooling shown in image not included, custom per application



Horizontal - Example



Vertical - Example

# Multi Process Assembly Press Workstation

- ▶ PST50 Press H-Frame for 10 to 50 kN
  - Specific mounting plates (PST10, PST20, PST35 or PST50)
- ▶ PST Press Spindle minimum stroke of 200 mm is required
- ▶ Safety and ergonomic features
  - Guarding
  - Light curtains
- ▶ Integration and Process accessories available
  - Optional bases, press tables and platens available
  - Press tooling and quick change devices

## CUSTOMER VALUES

- ▶ Complete: turn key solution
- ▶ Flexibility: adjustability for multiple operations



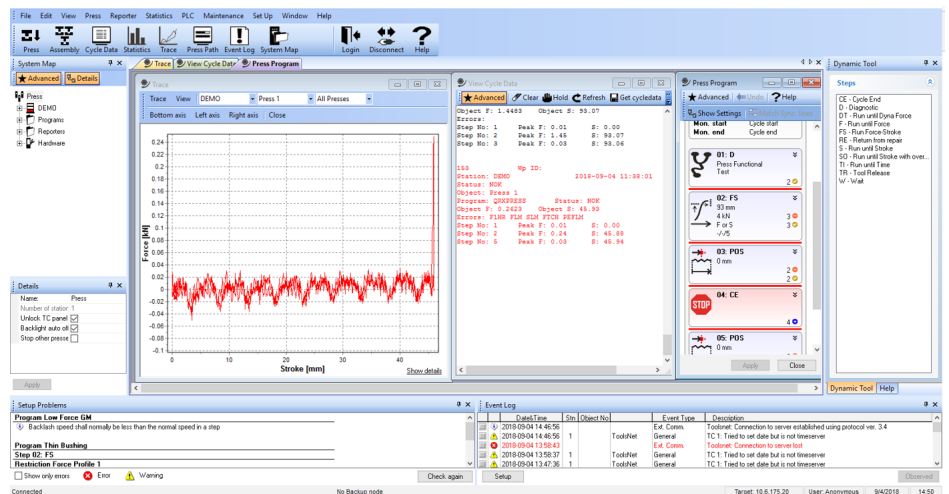
PST Press Station –  
H-Frame – PST50, Stationary  
Base and Plain Platen



PST Press Spindle,  
Power Macs 4000  
controller and Cable

## Tools Talk Power MACS Press

- ▶ The complete software package
- ▶ Bringing full control, monitoring and data acquisition capability to your press operations.



## *Committed to sustainable productivity*

We stand by our responsibilities towards our customers,  
towards the environment and the people around us.  
We make performance stand the test of time.  
This is what we call — Sustainable Productivity.

